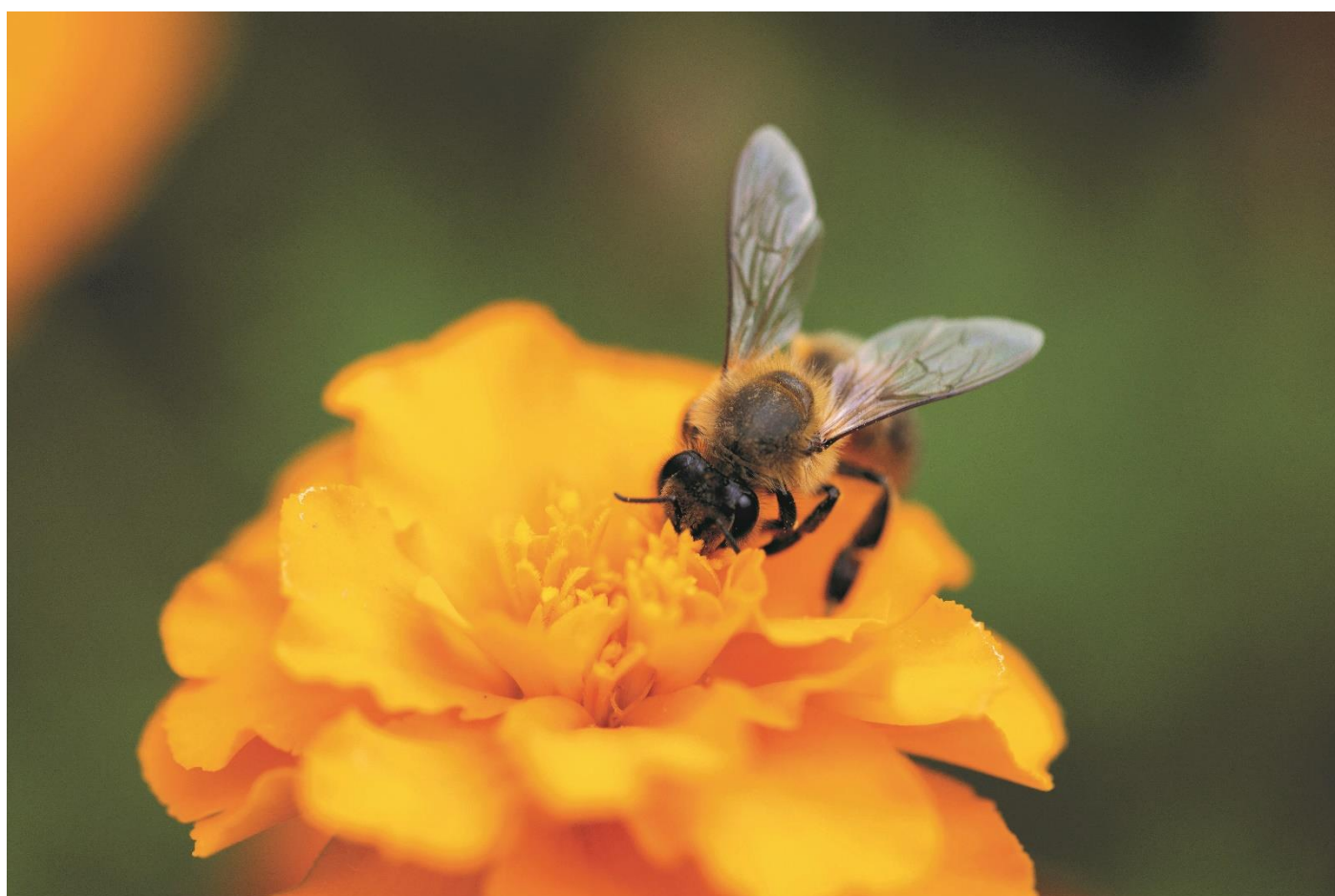


# Co-production Framework 2023 - 2028

Easy Read



This booklet will tell you all about the  
St Andrew's Healthcare Co-production Framework

# What is in this booklet?

Page 3 – 5	What is co-production?
Page 6	Co-production creates wise expertise
Page 7	The ladder of co-production
Page 8	Co-Production Network
Page 9	Co-production framework
Page 10	What does co-production mean for me?

# What is Co-production?



Co-production is an important part of how we care for our patients and service users.

Co-production means:

**“Every person may have something different to give; we listen to all of our people, because we know everyone has an important experience to share.”**

Co-production will help everyone feel listened to.



Everyone means;

- Patients and service users,
- Partners in care. For example, family and friends
- Staff at St Andrew's Healthcare.



Co-production will help us to work together to improve the care and treatment at St Andrew's Healthcare.

# What is Co-production?

**Co-production is not just a buzzword.**



A person in our care said co-production is similar to bees.

Bees work together to make honey.

Just like bees, **we know that working together benefits everyone.**



What a person in our care said about co-production:

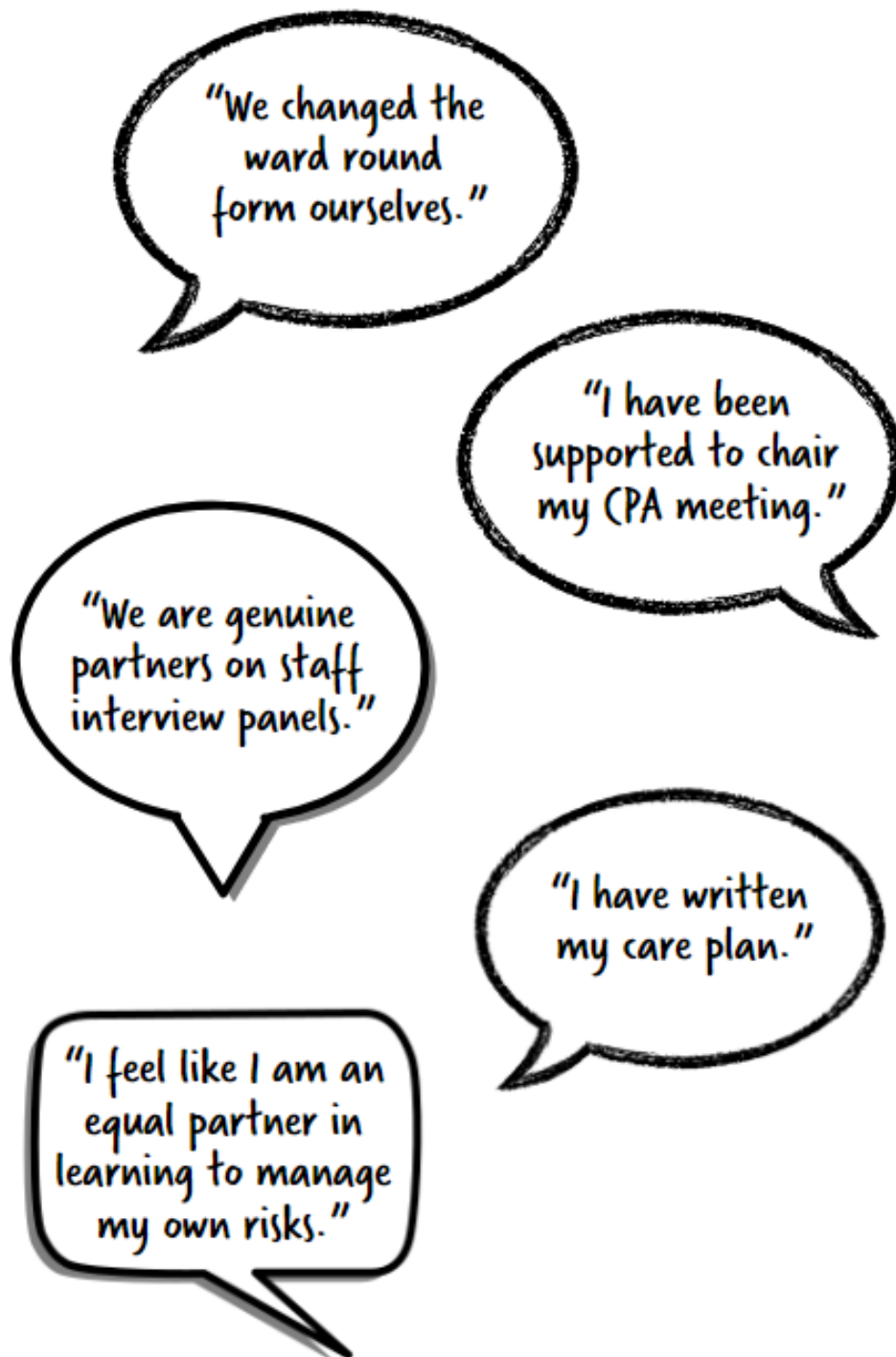
- “I feel that I have a voice that will be listened to”.
- “I believe that co-production could herald\* a new direction in care.”

\*‘bring about’

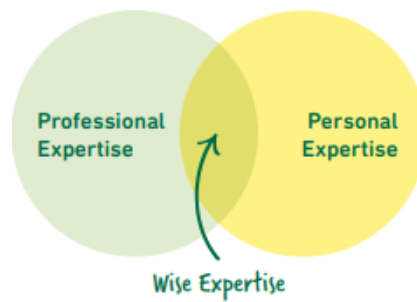
# What is Co-production?

Quotes from our patients and service users about co-production.

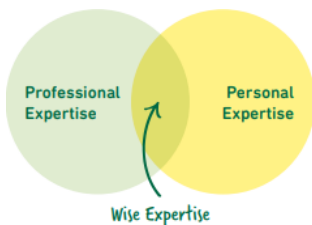
Coproduction is when...



# Co-production creates wise expertise



(Wise expertise model by Stephen Parker, REDS Recovery College Lead, 2022)



**Wise expertise** happens when people with **professional expertise** and people with **personal expertise** work together.



**Professional expertise** – this means staff who have studied and worked in mental health services.

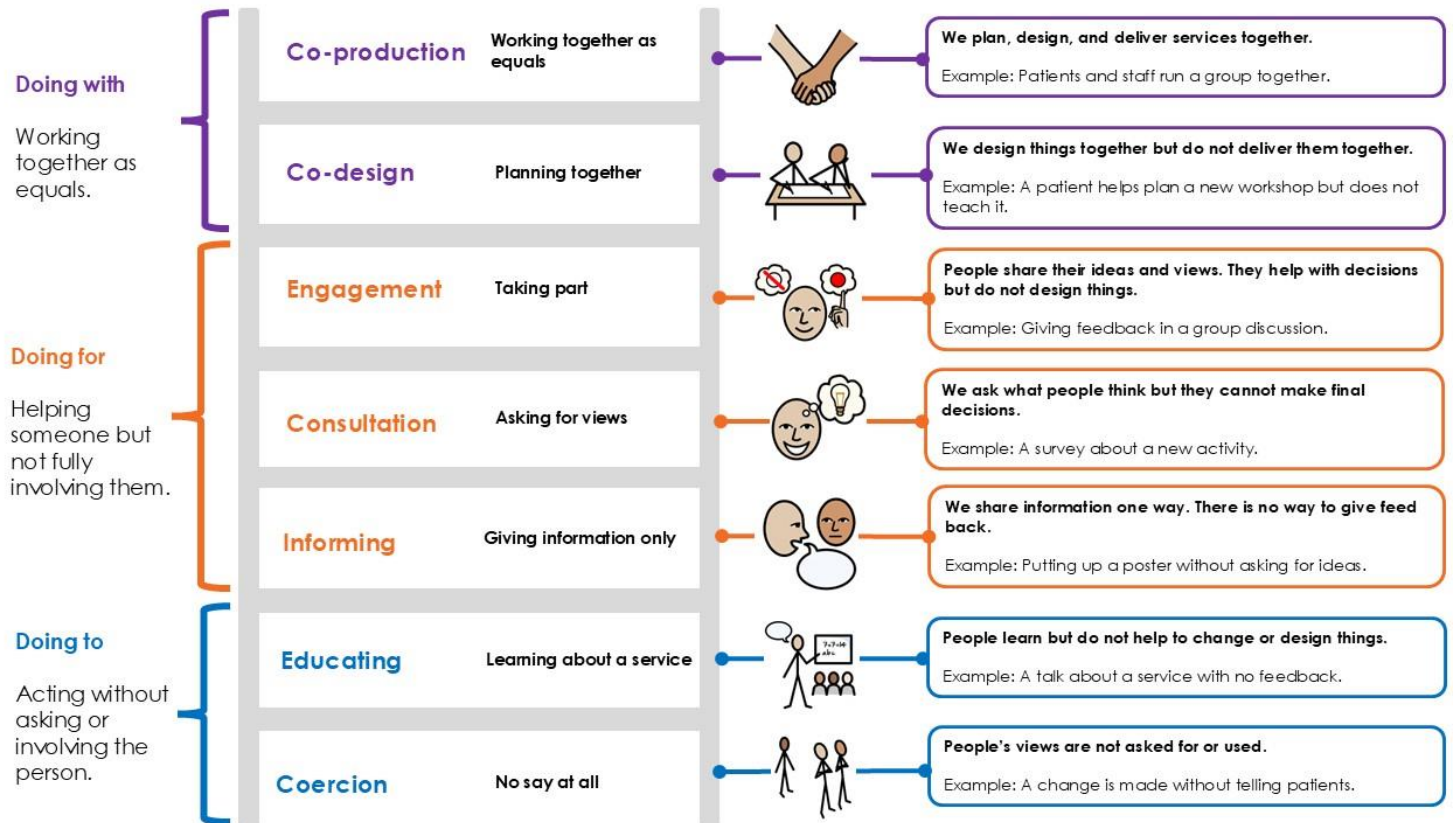


**Personal expertise** – this means

- People who have a lived experience of living with mental illness,
- People who have cared for people living with mental illness.

# The ladder of co-production

The ladder of co-production describes different steps towards full co-production in health and social care.



Adapted from <https://www.thinklocalactpersonal.org.uk/co-production-in-commissioning-tool/co-production/In-more-detail/what-makes-co-production-different/>

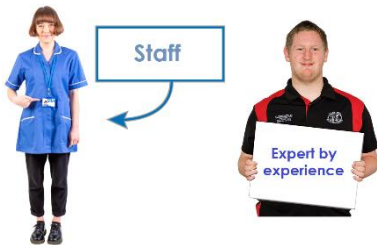


# Co-Production Network

## Information about the Co-Production Network



The co-production framework was created by the St Andrew's Healthcare Co-Production Network.



This network includes staff from St Andrew's and experts-by-experience.

Experts-by-experience are people who have experience of using services or caring for someone who uses services.



The co-production framework will be used across St Andrew's Healthcare.



# Co-production Framework



The co-production framework will help to make sure any improvement plans have the right support they need to work.

## The aims of the co-production framework:



To help everyone understand what co-production means and the importance of co-production.



To help people with lived and living experience of mental health to be seen as experts.



To treat everyone as equal partners.

To make sure everyone is treated with respect.



To make sure everyone's voices are heard and their opinions are valued.



To make sure that the co-production approach is working well.

# What does co-production mean for me?

## What does co-production at St Andrew's look like?



**For patients, service users and partners-in-care (for example, family, friends etc.):**

Working together as equal partners in decisions about care and treatment.



**For staff at St Andrew's:**

Staff should value everyone's thoughts and opinions; This includes patients, service users and partners-in-care.

Staff should be supporting people to be involved in co-production.



**For St Andrew's Healthcare:**

St Andrew's Healthcare want to become a leader in co-production across mental health care.

St Andrew's Healthcare will work with and support people with lived or living experience to have a voice in their care and mental health services.