



St Andrew's conferences

Autistic Spectrum Disorder and Learning Disabilities



Transforming Care: Transforming Lives

Developing realistic care pathways

St Andrew's Northampton

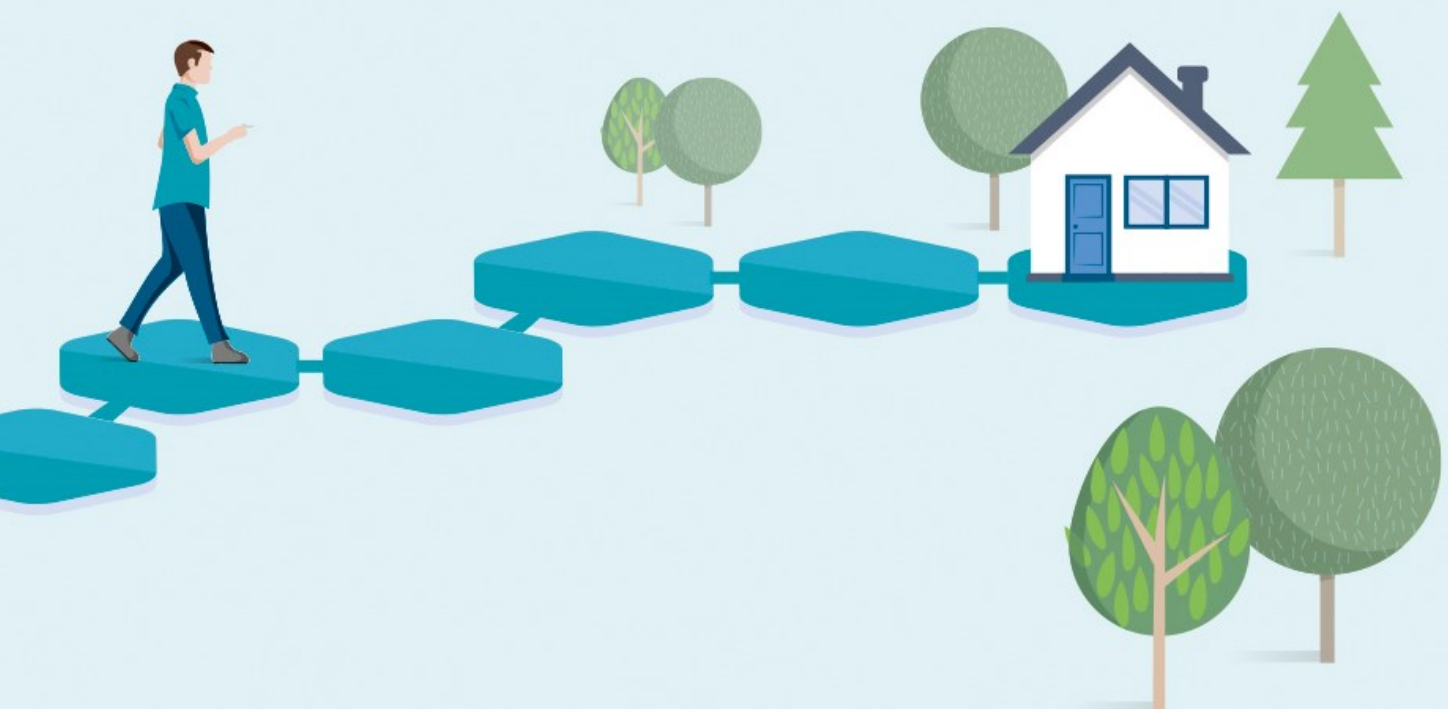
Wednesday 29 November 2017

Keynote speakers:

Dr Roger Banks, National Senior Psychiatry Lead, Learning Disability Programme, NHS England

Prof. John Taylor, Professor of Clinical Psychology, Northumbria University

A one day event focusing on care pathways that are realistic, deliverable
and really do transform lives.



Awarded 6 CPD points
subject to peer review

Transforming lives together

Transforming Care: Transforming Lives

Developing realistic care pathways



St Andrew's Northampton

Wednesday 29 November 2017

In challenging environments how do we, as Mental Health Care providers, move people through the care pathway and in to the community?

People with Learning Disabilities /Autism Spectrum Disorder pose challenges to our services and we need to change and innovate to meet their complex mental health and ASD / LD needs as they move to the community.

What do we need to think about?

- Adapting environments for LD/ASD patients by recognising their sensory needs
- Providing vocational opportunities
- Working with patients to co-produce care plans
- Providing Psychological Behavioural Support
- Understanding the environments that people need
- Having expert knowledge about the clinical needs of these individuals
- Structural considerations: Health Economics and the relationships between providers, CCGs and the NHS.

This one day event will focus on **innovating thinking** and **idea sharing** about how to move people **from inpatient to community care**; maintaining and improving quality of life, whilst recognising the reality of budget constraints.

We will have a number of **presentations** and **workshops** from experts in the field as well as patients and carers telling their own stories in their own words. This will allow us to consider pathways, interventions, therapies and innovation.

This event allows you to take a day away from your usual practice to think and talk about how we take transforming care forwards to improve patient lives.

Come along to listen, engage, share and learn.

Conference aims and objectives:

- To get the Mental Health Care industry talking about Transforming Care and its challenges
- To provoke thoughts on innovation and change within LD/ASD services
- To discuss and share ways to improve the quality of life for people living with LD/ASD

This conference will provide:

- A range of keynotes, workshops, research, exhibits and posters to enable creative thinking and idea sharing from those who work within the Mental Health Care industry around the country.

Who will benefit from attending:

Anyone, from any profession, who works in Mental Health Care Services with patients with LD or ASD.

Follow the conversation on twitter: [#TransformingLives](#)



Early bird delegate fee £79.00 on or before 3 November 2017

Standard delegate fee £99.00 after 3 November 2017

Agenda

- 9.15 – 9.30 **Welcome and introduction by your hosts**
An expert with lived experience of St Andrew's supported by **Alice Parshall**, Chief Medical Officer and **Louise Braham**, Clinical Director LD & ASD pathways, St Andrew's
- 9.30 – 10.30 **Leadership and Culture in Transforming Care**
Keynote **Dr Roger Banks**, National Senior Psychiatry Lead, Learning and Disability Programme, NHS England
- 10.30 – 11.30 **Engaging with families: family support services and family therapy outcomes**
Stainton Stewart, Clinical Nurse Lead, St Andrew's
Deborah Morris, Lead Consultant Psychologist, St Andrew's
Workshops select 1 **Lorraine Higham**, Consultant Psychologist, St Andrew's
Kelly Tompkins, Lead Social Worker LD, St Andrew's
Sharon Maher, Lead Social Worker ASD, St Andrew's
- Vocational opportunities: supporting people towards employment in the community**
A St Andrew's patient supported by **Mike Adams**, Head of Occupational Therapy,
Rachel Harwood, Senior Occupational Therapist and **Nick Todd**, Lead EVOLVE Practitioner, St Andrew's
- Community Transitions and legal frameworks**
Philip Barron, Consultant Psychiatrist, St Andrew's
- 11.30 – 11.45 **Refreshments**
- 11.45 – 12.45 **Evaluation of a Discharge Protocol Intervention in a locked rehabilitation service: impact on discharge, readmission, medication and restraint**
Keynote **Prof. John Taylor**, Professor of Clinical Psychology, Specialist Adult Services, Northumbria University
- 12.45 – 13.45 **Lunch, exhibition and poster viewing**
- 13.45 – 14.30 **Transforming minds: if we really want to transform care we first need to change attitudes**
Juli Crocombe, FRC Psych, Consultant Associate, AT Autism
- 14.30 – 15.15 **The National Autism Project: effectiveness and cost effectiveness of interventions in autism**
Ian Ragan, Director of the National Autism Project
- 15.15 – 15.30 **Refreshments**
- 15.30 – 16.30 **Making sense of your senses: utilising this knowledge to manage transitions**
Karen Shaw, Senior Occupational Therapist, St Andrew's
- Workshops select 1** **PBS: safer day-by-day**
Peter Ford, Lead Consultant Psychologist, St Andrew's
- Putting patients at the heart of service evaluation and development: a co-production approach**
A St Andrew's patient supported by **Laura Lovejoy-Carter**, Health Care Assistant and **Deborah Morris**, Lead Consultant Psychologist, St Andrew's
- 16.30 – 16.45 **Thank you and close**

Transforming lives together

Transforming Care: Transforming Lives

Developing realistic care pathways



Delegate booking form

Early bird delegate fee £79.00 on or before 3 November 2017

Standard delegate fee £99.00 after 3 November 2017

To **book your delegate place** at this event, please complete this form, detach and return accompanied with payment to:
Liz Evans, Transforming Care: Transforming Lives, St Andrew's Healthcare, Cliftonville House, Cliftonville, Northampton, NN1 5DG or **email your details to ecevans@standrew.co.uk**

Closing date for delegate bookings is: **22 November 2017**

Name:

Job title:

Organisation:

Email:

Telephone no:

Dietary requirements:

Workshop selection 10.30 – 11.30

Engaging with families ☐

Vocational Opportunities ☐

Community Transitions ☐

Workshop selection 15.30 – 16.30

Sensory OT ☐

PBS ☐

Co-production ☐

Payment can be made via:

(tick as appropriate)

- sending a cheque with your booking form made payable to, St Andrew's Healthcare ☐
- debit / credit card payments can be made via PayPal* on our website; stah.org/who-we-are/events/ ☐
(*you do not need to open a PayPal account for a single transaction)

If you have any questions about the conference, please contact **Liz Evans** on **01604 616584** or email **ecevans@standrew.co.uk**

Refunds and Cancellations

In the event of needing to cancel your delegate place, a full refund will apply if the cancellation is received in writing by St Andrew's with more than 2 weeks notice prior to the event. We regret that a cancellation after this time cannot be refunded and refunds for failure to attend a conference cannot be made. However substitute delegates may attend in your place upon your giving us prior notice.

Terms and conditions

1. Confirmation of delegate bookings will be sent by email within 5 days of receipt. **2.** Acceptance by St Andrew's of this completed booking form constitutes a legally binding contract. **3.** St Andrew's reserves the right to restrict admission to its events. **4.** Attendance at this event is conditional upon delegates observing the rules and regulations of the venue. **5.** St Andrew's reserves the right to vary or cancel a conference where necessary. **6.** Prices may be subject to change.

I confirm I have read and agree with these terms and conditions. ☐ I do not wish to receive further information on future events organised by St Andrew's. ☐