



Centre for Developmental and Complex Trauma

Part of St Andrew's Healthcare

JUNE 2024



CDCT@stah.org



[@CDCT_Updates](https://twitter.com/CDCT_Updates)



www.stah.org/cdct/



CONTENTS

INTRODUCTION	3
WHAT WE DO	4
THE TEAM	5
OUR BASE	6
RESEARCH PROGRAMME	7
STUDENT AND PROFESSIONAL TRAINING PLACEMENTS	8
INTERNATIONAL CONFERENCING PROGRAMME	9
SPECIAL INTEREST GROUPS	10
ANNUAL RECOGNITION AWARDS	11
CPD PROGRAMME	12
HIGHER EDUCATION	13
ADVISORS, GOVERNANCE AND OVERSIGHT	14
WORKING WITH US	15
VOLUNTEERING WITH US	16
MEMBERSHIP OF THE CDCT	17
OUR PUBLICATIONS	18-23
CONTACT US	24

INTRODUCTION



Centre for Developmental
and Complex Trauma
Part of St Andrew's Healthcare

The CDCT was established in March 2021, as a part of St Andrew's Healthcare, with the central goal of improving outcomes for marginalised social groups who have experienced significant and prolonged exposure to trauma and adversity.

The CDCT focuses on working with the most disenfranchised sections of society, who are typically the most adversely impacted by psychological trauma. As such, we have a strong focus on integrity, social justice, empowerment and advocacy, with the goal of influencing local and national policies.



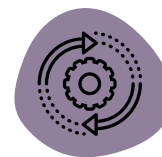
Integrity



Academic
Excellence



Social Responsibility



Transformation

Our values

Our values integrate the contemporary frameworks of working with trauma-exposed populations, with a high level of academic rigour. Central to our values are the role of co-production and empowerment. The CDCT operates a highly collaborative working model, prioritizing developing relationships with stakeholder groups to ensure that our work aligned to our values.

Of central importance is reducing the gap between research and clinical practice and ensuring that research is able to drive data-driven personalized care. To meet this goal, all of our CPD events, research and service development activities are conducted through an intersectional lens, with the differential impact of gender, neurodiversity and ethnicity playing a central role in the design and reporting of our activities.

"The CDCT is a multidisciplinary unit aiming to improve the lives of those who have experienced psychological trauma. The team are producing high quality training and conduct research work that will have a direct impact on clinical practice in the UK and beyond."

Professor Thanos Karatzias, Professor of Mental Health, University of Napier

WHAT WE DO



Centre for Developmental
and Complex Trauma
Part of St Andrews Healthcare

The core aim of the CDCT is to drive better outcomes for people who have experienced repeated incidents of trauma in early and later life. To achieve this goal, the CDCT delivers an growing portfolio of activities and services that seek to advance knowledge, skills and practice.

Currently, the CDCT offers four international annual international conferences and offers comprehensive research skills workshops. We have an evolving research programme with eight trauma focused work streams and over 20 active projects, many of which are conducted with University and non-profit organisation partners.

Research, service improvement & evaluation

Academic conferencing programme

Continued Professional Development events

Special Interest Groups (SIGs)

Clinical & research placements

Professional practice placements

Consultation & supervision





THE TEAM



Centre for Developmental
and Complex Trauma
Part of St Andrew's Healthcare

The CDCT consists of core full-time members, students, professional training placements, secondments and an extended network of associates and volunteers.

The CDCT is led by a consultant clinical psychologist, Dr Deborah Morris, who has over 15 years post-qualified experience in working with different populations with trauma needs.

The core team also comprises a consultant Forensic Psychologist & Senior Lecturer, Research Associate and Lecturer as well as a Peer Policy and Practice Advisor and senior administrator. The extended team consists of placement students and volunteers.

In keeping with the collaborative values of the CDCT, we have strong links to researchers and clinicians in university and clinical settings who specialise in trauma.

Since initially launching as a research stream in March we have worked and published with over 150 clinicians, students, volunteers and researchers across our different workstreams.

"Working in the CDCT has enabled me to develop a wealth of advanced skills in research, leadership and teaching. The opportunities I have been given have provided me with a strong foundation for a career in applied research"

- Elanor, Research Associate & Lecturer



Dr Deborah Morris
Director of
Programmes and the
CDCT



Elanor Webb
Research Associate &
Lecturer



David Gibbs
Policy and Practice
Advisor



Jon Taylor,
Consultant Psychologist
& Senior Lecturer



Lisa Chambers,
Senior Administrator

OUR BASE

The CDCT moved into the new Foster Postgraduate Centre (FPC) in April 2023, following extensive re-development, to create an exceptional learning space. The refurbishment was funded by St Andrew's Healthcare, with the design and development of the FPC overseen by the Estates and Facilities Department, STAH and the CDCT.

The FPC functions as a dedicated higher education environment and hosts the facilities that students would expect of a university campus.

Facilities in the FPC include:

- Two IT-equipped lecture rooms
- Six seminar, meeting and study rooms
- Library and computer facilities
- Student lounge area
- Kitchen & eating area
- Therapy observation training suite
- Placement student offices
- Staff offices
- Toilets, including an accessible toilet

The move to the FPC was key to the expansion of the postgraduate and CPD programmes developed by the CDCT.



RESEARCH AND SERVICE DEVELOPMENT PROGRAMME

Our research & service development programme

The CDCT aims to ensure that the differential experiences, clinical needs and outcomes of marginalised populations are better understood, resulting in personalised approaches to care. Delivering research and service improvement projects that meet these priorities is a core activity of the CDCT.

The CDCT has an evolving research and service development programme that spans six workstreams, generating over 80 publications, as follows:

- Trauma in neurodiverse populations
- Gendered approaches to trauma
- Complex trauma and comorbid needs
- Deaf people and trauma
- Occupational Trauma
- Moral Injury



Centre for Developmental and Complex Trauma
Part of St Andrew's Healthcare

Applying an intersectional lens

An intersectional lens is adopted across our workstreams and encompassed projects to ensure that our understanding of individual needs reflect the experiences of all individuals in a given population. Research is approached through this lens across the various stages of the research cycle, from idea generation and research design, to write-up and dissemination.

"The CDCT research programme is ambitious, and it is tackling neglected areas of enquiry including the clinical needs of deaf people who have experienced trauma. Such research is expected to have great impact in clinical practice"

Professor Thanos Karatzias



Key outputs

Ensuring that our findings are disseminated is critical to reducing the gap between research and practice. We prioritise publishing in a range of forums, including peer reviewed journals, book chapters, invited essays, conference presentations and podcasts. A full list of our current publications can be found at the end of this brochure

STUDENT AND PROFESSIONAL PLACEMENTS

 Centre for Developmental and Complex Trauma
Part of St Andrew's Healthcare

University placements

We host 12-month undergraduate placements that offer a combination of research and clinical activities. For medical and nursing students, briefer placements, can be negotiated.

The CDCT also hosts placements for those undertaking MSc, MRes and PhD studies. For MSc students, we offer a minimum 12-week placement. Placements are offered conditional to an informal interview.

All of our past students have secured a range of academic and clinical roles, commensurate with their level of experience, including assistant psychologist posts, and PhD and doctoral training positions.

Specialist Research placements

We can support students to develop their own trauma-related projects, as well as supporting the development of proposals drawn from the CDCT's own programme.

Additionally, we supervise students to develop skills in quantitative and qualitative methodologies.

The CDCT has a record of supporting postgraduate research dissertations that result in peer-reviewed publication. We work with students to present their findings at conferencing events and the majority of our students have presented at UK and international conferences.

"Working here has provided opportunities to apply and broaden my research and interpersonal skills, which I'm confident will be key for my future career in psychology"

- Petch, MRes student

Professional training placements

Specialist postgraduate psychology, nurse and psychiatry placements are also available, and are offered for a minimum of 12 weeks, up to 2 years.



INTERNATIONAL CONFERENCE PROGRAMME

The CDCT conference programme, initially launched in November 2020, continues to grow as strong international events, attracting delegates and speakers from across the globe. The CDCT typically hosts 3-4 online International trauma focused conferences a year, typically with partner organisations in the NHS or Charity sectors.

Our events have an applied clinical focus on disseminating the latest evidence to guide clinical practice. We regularly collaborate with trauma and mental health organisations to ensure that our events reflect the needs of the populations we support.

- Events focused on key clinical issues
- Delivered by world class experts
- Hosted with accessible and affordable platforms
- Inclusive of those with lived experience

To reflect the diverse nature and impact of trauma, the CDCT hosts a large annual conference, and a series of smaller events, highlighting the needs of marginalised social groups. These events mirror the format of the annual conferences and attract strong international interest from delegates and speakers.

"Thank you all so very much - this has been such a valuable investment of time!" delegate, MIC 2023

"Thank you for such a thought provoking and well planned conference, really helpful to me," delegate, trauma needs of Neuro diverse populations 2022

100%

of delegates reported they learnt something new at our events

99%

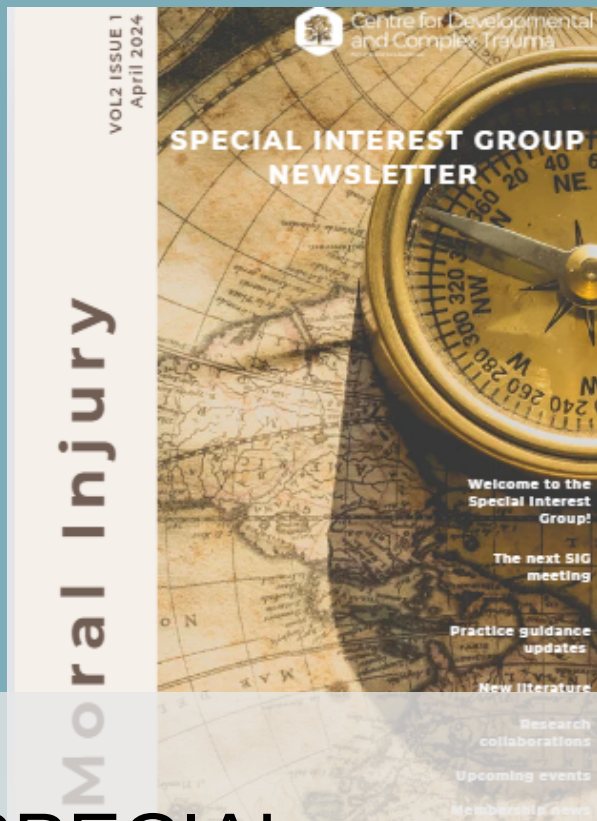
of delegates reported they would attend a future conference hosted by us

100%

of delegates report they would adapt their practice after attending one of our conferences

"Best conference of the year, two years running because you orchestrate inspiring, provocative conversations, and it's so well run," speaker MI 2022

SPECIAL INTEREST GROUPS



The special interest group model has been adopted By the CDCT to connect academics, clinicians, researchers, students, and professionals with an interest in discreet areas of trauma, in order to facilitate building collaborative programmes of works.

Our SIGs provides a platform for the CDCT to share it's ongoing research activities in the field and disseminate key findings, ideas, and advancements to a wide audience both within and external to the charity. It achieves this through bi-annual meetings with it's members and guest speakers, as well as a quarterly newsletter.

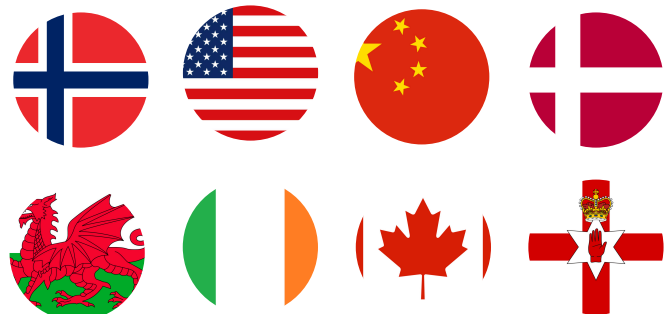
We lead SIGs in the areas of Moral Injury, Meeting the trauma needs of people with personality disorders and most recently, working with deaf people with trauma needs.

The CDCT will continue to expand it's portfolio of SIGs to support the development of connections and networks in other specialties.

SIG membership

The CDCT SIG groups have attracted an international membership with researchers and clinicians from England, Wales, Ireland, Denmark, Norway, US and China attending.

We have attracted international speakers to the events, which have also resulted in members attending our international conference and initiating research collaborations.



"From joining the SIG, I have gained lots of valuable information to feedback to my team"

- Moral Injury SIG Member

Promoting Excellence in Psychological Trauma Research and Practice

Annual Recognition Awards

Launching June 2024

ANNUAL RECOGNITION AWARDS IN TRAUMA RESEARCH AND PRACTICE

There are six annual recognition awards

- Clinical initiative improving practice & outcomes for service users
- Clinical initiative that provides professional development or improves support for staff groups working with trauma populations
- Clinical or research initiative demonstrating strong coproduction / lived experience component that improves outcomes for service users
- Early stage career research award: Applied research that focuses on improving understanding psychological trauma
- Established career award: Applied research that focuses on improving understanding psychological trauma
- Applied research or clinical initiative that improves understanding, management or outcomes of psychological trauma in marginalised populations

In keeping with the goal of nurturing and supporting practitioners, the ARA's are associated with 'prizes' that will clinicians and researcher to continue to develop their practice and knowledge in psychological trauma.



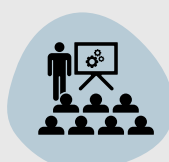
£250 per team



4 x specialist
supervision sessions,
across 12 months,
from the ARA judges



Presenting the
submission at the 5th
International TIC
online conference



Free access to CDCT
trauma conference (4
people per team, 12
months)



Winning submissions
published in a volume
FREELY circulated
across the UK and
beyond

New for 2024 are the launch of the Annual Recognition Awards in Trauma Research and Practice. In collaboration with the Crisis, Disaster and Trauma Section of the British Psychological Society, The Compassionate Mind Foundation and the RADiANT research Group, the CDCT have developed recognition awards that will highlight, support and promote practice and research developments in the field of psychological trauma.

The awards have multiple aims, which include, reducing the gap between research and clinical practice, supporting formalising practice based evidence and highlighting the needs of marginalised groups to ensure an equitable place in psychotraumatology practice and innovations. In recognition of the need to educate, empower and support staffing groups, an award dedicated to those working with staff groups has also been developed. The awardss provide an accessible platform for clinicians and researchers to promote their work.

CPD PROGRAMME



Centre for Developmental and Complex Trauma
Part of St Andrew's Healthcare

Workshops are delivered in person, though some can be accessed remotely.

The CDCT delivers a range of online and in person CPD workshops, offering clinicians the chance to develop skills that will improve the rigour of research in clinical settings. Our workshops cover all stages of the research cycle, from the development of research questions to the dissemination of findings, and are mapped onto the 'Researcher Development Framework' (RDF).

To ensure a high standard of delivery, workshops are facilitated by members of the CDCT who have published in peer-reviewed journals, and are experienced in the methodologies being taught.

The 'Research Skills for Clinicians'

workshop brochure can be downloaded directly from our website at <https://www.stah.org/cdct/events>.

Attendee's benefit from ongoing access to a TEAMS channel containing a range of useful resources.

"The workshop was well designed, focusing on the key elements of systematic reviews. I enjoyed how it was delivered and the pre-course materials were helpful"

'Conducting systematic reviews' attendee



Alternatively, you can email us at CDCT@standrew.co.uk to request a copy of the brochure and booking form. .

"I enjoyed the application of knowledge and skills to a real paper. It is useful to support my MBA research and will be of value for future peer reviews that I am involved in as a reviewer or author."

'Reviewing Journal Articles' attendee

MSC
PRACTITIONER

Psychological Trauma

HIGHER EDUCATION

In partnership with the Faculty of Medicine and Life Sciences, University of Buckingham, the CDCT have developed a series of six postgraduate courses that provide a strong academic and clinical framework to professional training in psychological trauma.

The series of courses, which are listed for accreditation with the British Psychological Society, provide students with the comprehensive framework of knowledge and skills needed to function at an 'expert' level.

The first course, an MSc, 'Practitioner in psychological trauma'. had its inaugural intake in September 2023, with a second cohort recruited for September 2024. Additional postgraduate course, an online PGDiP in 'Complex Trauma', will have its first intake in January 2025. Further programmes will follow in Sept 2025.

All in person postgraduate programmes, including lectures, seminars and workshops for our postgraduate courses take place at the CDCT post graduate centre in Northampton, in the dedicated Foster postgraduate centre facilities.

'Postgraduate programmes such as this are vital to ensure that our workforce receive the training they need to manage the complex world of healthcare delivery. The Faculty of Medicine and Health Sciences at University of Buckingham is delighted to be partnering with St Andrews to deliver this MSc in the all important area of psychological trauma.'



Professor Joanne Harris,
Dean, Faculty of Medicine
and Life Sciences



"I appreciate the additional mechanisms for support, this has been invaluable. Lunchtime sessions, tutor meetings, the approachability of the team has all been greatly appreciated."

Current MSc student feedback



ADVISORS, GOVERNANCE AND OVERSIGHT

Growing according to our values and retaining a high level of scientific and academic rigour is key to our future success.

To do so, we recognise that utilising the support and wisdom of experts in the field of trauma, government policy, academia and people management is needed.

To achieve this, the CDCT has established the 'Trauma Advisory Group' that oversees and supports its activities and development. Performance of the CDCT is in part measured by a series of Key Performance Indicators (KPI's).

The Strategic Trauma Advisory Group (STAG)

The STAG is chaired by Professor Thanos Karatzias, Professor of Mental Health and Director for Research and Development at Edinburgh Napier University. He is a leading global expert in psychological trauma. STAG meets quarterly to provide strategic overview, direction and support to the expansion of the CDCT and its portfolio.

THE CDCT STRATEGIC ADVISORY GROUP



Dr Sanjith Kamath, Executive Medical Director, Charity trustee, St Andrew's Healthcare,



Dr Emily Fox, President Society for DBT, UK, Director of Psychological Therapies, St Andrew's Healthcare,



Professor Thanos Karatzias
Professor of Mental Health
University of Napier
CDCT consultant advisor,
Strategic Advisory Group Chair



Dr Annette Greenwood
Chair elect, Crisis, Disaster & Trauma
Section, BPS
Staff Trauma Lead, St Andrew's
Healthcare



WORKING WITH US

Collaboration

A key aim of the CDCT is to develop partnerships between stakeholder groups and to facilitate inter-agency and interdisciplinary working. We are involved in a number of collaborations with leading universities and academics, support groups, organisations and charities. Past and present collaborators represent the national and international reach of the CDCT:

Consultancy

The CDCT also offers support to researchers and organisations in the development of clinical research, on a consultancy basis. In the last two years, we have supported and advised a number of independent providers on research design, service improvement initiatives and staff training.



The CDCT has been successful in developing partnerships, and commissioned work, with leading academic, professional and government agencies, nationally and internationally. Collaborations include research, commissioned reports, conference hosting, policy development and editorial work.



VOLUNTEERING WITH US

Volunteering

The CDCT also facilitates opportunities for research experience on an honorary research contract basis.

We recognise the mutuality of value that volunteers bring to the CDCT. Besides gaining applied skills and knowledge, our volunteers also receive support in preparing for the next stages of their career. This includes support with applications for professional training, and preparation for interviews, including role plays and scenario planning.

"Volunteering as an honorary research assistant gave me the invaluable opportunity to learn how skills taught at university are applied in a clinical setting.... I was able to co-author a published paper, which was really exciting and will be a great accolade to add to my CV and doctorate application later on."

"Volunteering with the CDCT as an honorary research assistant has provided me an experience that I never thought I would have the privilege of engaging with when I first began my employment with St Andrew's. It can be extremely difficult to gain crucial research experience that is vital to the role of psychology as a whole. Through my time and experience of CDCT, I have been provided with both the autonomy and supervision to develop my research skills within the area of report writing. Not only does this role offer me the opportunity to develop my skills within this domain, but also the experience of working with other likeminded volunteers who also have a passion for research. Furthermore, I have been fortunate enough to be offered the opportunity of co-authoring research, an experience that is invaluable to both my CV and future job and training applications."

- Jack Wainwright, Honorary Research Assistant

The benefits of volunteering with us

The CDCT also facilitates opportunities for research experience on an honorary contract basis.

All volunteers who have been with the CDCT for 6+ months have gone on to co-author research papers published in peer-reviewed scientific journals or presented at international conferences.



MEMBERSHIP OF THE CDCT

The CDCT aims to bring together those with lived experience of trauma, and those involved in the delivery of care and treatment for people with trauma needs.

Membership to the CDCT is completely free and available for:

- Survivors of trauma and their families/carers
- Clinicians
- Academics
- Others responsible for or involved in the commissioning and delivery of trauma services

To join the CDCT, please download the membership form from our website at <https://www.stah.org/cdct/membership> and return this to the CDCT inbox at: CDCT@standrew.co.uk

Membership of the CDCT affords a range of benefits including:

1

Discounted rates on tickets for our programme of conferencing events

2

Preferential access to the Centre's research skills workshops and other CPD events

3

Unique opportunities to collaborate on research projects

4

Access to join the Centre's special interest group (SIG) networks

OUR PUBLICATIONS

Invited Podcasts

Nazroo, J., Morris D, J., & Webb, E. (2021) Identities and Multiple disadvantage Revolving Doors Agency, The Knot: Responding to Poverty, Trauma & Multiple Disadvantage, Hosted by, Clare Runacres March 2021

Morris D., J. (2021) Moral Matters (USA): Moral injury and the UK Picture, Hosted by Dr Wendy Dean, CEO, Moral Matters, USA. August 2021

Conference and Peer Reviewed Journal Publications

Umpunjun P., Webb., E. L., & Morris, D. J. (2024). Prevalence of types of adverse childhood experiences in incarcerated males: A systematic review and meta-analysis, *Psychology, Crime & Law*.

Morris, D., Hamilton, A., Webb, E. L., & Baker, K. (2024). International consensus guidance for meeting the trauma needs of deaf people [Oral Paper]. 1st International Meeting Trauma Needs in Secure Care Conference, Centre for Developmental and Complex Trauma & Crisis, Disaster & Trauma Section of the British Psychological Society, Northampton, United Kingdom.

Webb., E., L & Morris D., (2024) Attitudes towards disclosure of childhood trauma in males with forensic and mental health needs: Part one of a multi-phase investigation [Oral Paper]. 1st International Meeting Trauma Needs in Secure Care Conference, Centre for Developmental and Complex Trauma & Crisis, Disaster & Trauma Section of the British Psychological Society, Northampton, United Kingdom.

Webb. E. L., Baker. K., Morris. D., Nawab. Z., Gencarelli. B., Worsfold. J., & Hamilton. A. (2024) Leaving the past behind, Exploring the adverse childhood experiences of males detained to a secure specialist deaf inpatient mental health service [Oral Paper]. 1st International Meeting Trauma Needs in Secure Care Conference, Centre for Developmental and Complex Trauma & Crisis, Disaster & Trauma Section of the British Psychological Society, Northampton, United Kingdom.

Morris, D.J., Webb, E.L., Umpunjun, P., Fox., E., Dickens, A., Leson, A., Sadler, E., Lupattelli Gencarelli, B., Taylor, V., McAllister, P., & Karatzias, T. (2024). The critical role of affect regulation accounting for increased general distress, risk to self, and lower quality of life in females with EUPD and CPTSD, compared to EUPD alone, *European Journal of Trauma and Dissociation*.

Dean, W., Morris D., Manzur M, & Talbot, S. (2024) Moral injury in healthcare: A unified definition and its relationship to burnout. *Federal Practitioner*, May

Webb, E. L., Morris, D. J., Plant, K., Loganathan, L., & Khan, M. (in submission). Exploratory and confirmatory factor analysis of the Moral Injury Exposure and Symptom Scale-Civilian in secure mental healthcare workers. *Journal of Forensic Psychology Research and Practice*.

Morris, D. J., & Webb, E. L. (2024). Direct and secondary trauma: Rethinking occupational trauma [Oral Paper]. 1st International Meeting Trauma Needs in Secure Care Conference, Centre for Developmental and Complex Trauma & Crisis, Disaster & Trauma Section of the British Psychological Society, Northampton, United Kingdom.

Webb, E. L., Lupattelli Gencarelli, B., Keaveney, G., & Morris, D. J. (2024). Is trauma research neglecting neurodiverse populations? A systematic review and meta-analysis. *Advances in Autism*.

Webb, E.L., & Morris, D.J. Lupattelli Gencarelli, B., & Worsfold, J. (2024) The differential and accumulative impacts of self and other sources of moral injury on wellbeing in mental healthcare staff, *International Journal of Workplace Health Management*.

Morris, D.J. Webb, E.L., Dean, W., & Kamath, S., Worsfold, J., (in submission). Looking beyond the frontline: Senior healthcare leaders' personal, professional and psychological experiences of the COVID-19 pandemic in the UK, *International Journal of Workplace Health Management*.

Taylor, J., & Hocken, K. (2024). Illuminating the Dark Side: Life story and formulation work to understand criminogenic capacities and human harmfulness. *Abuse: An International Impact Journal*.

Swales, M., Karatzias, T., Fox, E., Gibbs, D., & Morris D.J. (2023) Round table discussion: The relationship between complex PTSD and Borderline Personality disorder.. the way forward? [Oral Paper]. 4th International Trauma Informed Care conference: Disentangling the relationship between Complex PTSD and Borderline Personality Disorder conference, [oral presentation]. Centre for Developmental and Complex Trauma & Crisis, Disaster & Trauma Section of the British Psychological Society, November, United Kingdom

OUR PUBLICATIONS

Conference and Peer Reviewed Journal Publications

McGrath, E., Taylor, V., Webb, E. L., & Morris, D. (2023). Examining the impact of comorbid complex PTSD and EUPD on risk incidents within a female inpatient DBT service. [Poster]. 4th International Trauma Informed Care in Practice Conference, Centre for Developmental and Complex Trauma & Crisis, Disaster & Trauma Section of the British Psychological Society, Northampton, United Kingdom.

Morris, D.J. (2023) Working with the intersection of trauma and personality needs: Reformulating approaches to HCP needs, Disconnects & reconnects [Oral Paper]. 4th International Trauma Informed Care in Practice Conference, Centre for Developmental and Complex Trauma & Crisis, Disaster & Trauma Section of the British Psychological Society, Northampton, United Kingdom.

Webb, E. L., Baker, K., Morris, D.J, Nawab, Z., Lupattelli Gencarelli, B., Worsfold, J., & Hamilton, A. (2023). Leaving the past behind: Exploring the adverse childhood experiences of males detained to a secure Deaf service. Journal of Forensic Psychology Research and Practice.

Webb, E. L., & Morris, D. J. (2023). Disclosing childhood trauma: A pilot study exploring attitudes and experiences of males who have disclosed to a professional [Oral Paper]. Division of Forensic Psychology Annual Conference, British Psychological Society, Belfast, UK.

Yemain, F., Fox., A. & Morris D.J. (2023). Black men speak, [Oral Paper]. Division of Forensic Psychology Conference, British Psychological Society, November, Belfast

Childs, L., Worsfold, J., Webb, E. L., Cobden, C., & Morris, D. J. Traumatic brain injury screening in male forensic services: Results of a service development initiative. [Oral Paper]. Division of Forensic Psychology Annual Conference, British Psychological Society, Belfast, UK.

Morris, D., Dean, W., Webb, E. L., Wainwright, J., Hampden, R., Marcussen, V., & Pinto, R. (2023). Developing guidance for defining and describing organisations that manage, mitigate and prevent moral injury in the workforce: A Delphi study. [Poster]. Division of Forensic Psychology Annual Conference, British Psychological Society, Belfast, UK.

Morris, D. J., & Webb, E. L. (2023). Paradigms and sources of distress in male healthcare workers: Understanding trauma through a gendered lens [Oral Paper]. Division of Forensic Psychology Annual Conference, British Psychological Society, Belfast, UK.

Steen, S., Morris, D. J., Urquhart Law, G., Fogarty, L., & Fox, C. (2023). Assessing moral injury and its clinical associations in a UK secure care population, Traumatology.

Morris D. J. (2023). What role does moral injury play in accounting for occupational distress in mental healthcare workers? [Invited Oral Paper], 10th Anniversary Crisis, Disaster and Trauma Section, BPS, Conference. April, London.

Morris, D. J., & Webb, E. L. (2023). Paradigms and sources of distress in male healthcare workers: Understanding trauma through a gendered lens. [Paper]. Division of Forensic Psychology Annual Conference, British Psychological Society, Belfast, UK.

Morris, D. J., Dean, W., Webb, E. L., & Talbot, S. (2023). Developing guidance for defining and describing organisations that manage, mitigate and prevent moral injury in the workforce: Initial findings from an international Delphi study. [Oral Paper]. 3rd International Moral Injury in Occupational Settings Conference, St Andrew's Healthcare, Northampton, United Kingdom.

Webb, E. L., Loganathan, L., Plant, K., & Morris, D. (2023). Risk or refuge? Exploring the effect of spirituality on moral injury in healthcare professionals. [Poster]. 3rd International Moral Injury in Occupational Settings Conference, Moral Injury of Healthcare, USA & St Andrew's Healthcare, Northampton, United Kingdom.

Webb, E. L., Ireland, J. L., Lewis, M., & Morris, D.J (2023). Potential sources of moral injury for healthcare workers in forensic and psychiatric settings: A systematic review and meta-ethnography. Trauma, Violence & Abuse.

Webb, E. L., & Morris, D. J. (2023). Foci of responsibility: Exploring the differential prevalence and impact of moral transgressions by the self and others [Oral Paper]. Comprehensive Moral Injury Conference, Moral Injury Support Network for Servicewomen, Seattle, USA.

Webb, E. L., Ireland, J. L., Lewis, M., & Morris, D. J. (2023). Potential sources of moral injury for frontline secure mental healthcare workers: A multi-system perspective [Oral Paper]. Comprehensive Moral Injury Conference, Moral Injury Support Network for Servicewomen, Seattle, USA.

Morris, D. J., & Webb, E. L. (2023). On the outside looking in: The potentially morally injurious experiences of healthcare leadership personnel during the COVID-19 pandemic [Paper]. Comprehensive Moral Injury Conference, Moral Injury Support Network for Servicewomen, Seattle, USA.

OUR PUBLICATIONS

Conference and Peer Reviewed Journal Publications

Morris, D. J., & Webb, E. L. (2023). To the core: Transcontextual systemic interventions for the prevention and management of occupational moral injury [Oral Paper]. Comprehensive Moral Injury Conference, Moral Injury Support Network for Servicewomen, Seattle, USA.

Webb, E. L., Baker, K., Morris, D. J., Nawab, Z., Lupattelli Gencarelli, B., Worsfold, J. & Hamilton, A. (2023). Leaving the past behind: Exploring the adverse childhood experiences of males detained to a secure Deaf service. *Journal of Forensic Psychology, Research and Practice*.

Webb, E. L., Morris, D. J., Sadler, E., Macmillan, S., Trowell, S., & Legister, A. (2023). Predictors of moral injury in secure mental healthcare workers: Examining a role for violence and restrictive practices through an intersectional lens. *Journal of Forensic Psychology Research and Practice*.

Morris, D. J., Webb, E. L., Worsfold, J., & Greenwood, A. (2023). Exploring the psychosocial and wellbeing needs of staff who access trauma support in secure mental health services: Relations with demographic, occupational and trauma event characteristics. *International Journal of Forensic Mental Health*.

Webb, E. L., Ireland, J. L., Lewis, M., & Morris, D. (2023). Sources of moral injury for healthcare workers in forensic and psychiatric settings: A systematic review and meta-ethnography. *Trauma, Violence & Abuse*.

Morris, D. J., & Webb, E. L. (2023). To the core: Transcontextual systemic interventions for the prevention and management of occupational moral injury [Paper]. Comprehensive Moral Injury Conference, Moral Injury Support Network for Servicewomen, Seattle, USA.

Webb, E. L., & Morris, D. J. (2023). Foci of responsibility: Exploring the differential prevalence and impact of moral transgressions by the self and others [Paper]. Comprehensive Moral Injury Conference, Moral Injury Support Network for Servicewomen, Seattle, USA.

Morris, D. J., Webb, E. L., Worsfold, J., & Greenwood, A. (2023). Exploring the psychosocial and wellbeing needs of staff who access trauma support in secure mental health services: Relations with demographic, occupational and trauma event characteristics. *International Journal of Forensic Mental Health*

Webb, E. L., Ireland, J. L., Lewis, M., & Morris, D. (2023). Sources of moral injury for healthcare workers in forensic and psychiatric settings: A systematic review and meta-ethnography. *Trauma, Violence & Abuse*.

Morris, D. J., & Webb, E. L. (2023). To the core: Transcontextual systemic interventions for the prevention and management of occupational moral injury [Paper]. Comprehensive Moral Injury Conference, Moral Injury Support Network for Servicewomen, Seattle, USA.

Webb, E. L., & Morris, D. J. (2023). Foci of responsibility: Exploring the differential prevalence and impact of moral transgressions by the self and others [Paper]. Comprehensive Moral Injury Conference, Moral Injury Support Network for Servicewomen, Seattle, USA.

Morris, D. J., & Webb, E. L. (2023). On the outside looking in: The potentially morally injurious experiences of healthcare leadership personnel during the COVID-19 pandemic [Paper]. Comprehensive Moral Injury Conference, Moral Injury Support Network for Servicewomen, Seattle, USA.

Webb, E. L., Loganathan, L., Plant, K., & Morris, D. (2023). Risk or refuge? Exploring the effect of spirituality on moral injury in healthcare professionals. [Poster]. 3rd International Moral Injury in Occupational Settings Conference, Moral Injury of Healthcare, USA & St Andrew's Healthcare, Northampton, United Kingdom.

Steen, S., Morris, D., Law, G. U., Fogarty, L., & Fox, C. (2023). Assessing moral injury and its clinical associations in a secure care population. *Traumatology*.

Morris, D. J., Dean, W., Webb, E. L., & Talbot, S. (2023). Developing guidance for defining and describing organisations that manage, mitigate and prevent moral injury in the workforce: Initial findings from an international Delphi study. [Paper]. 3rd International Moral Injury in Occupational Settings Conference, St Andrew's Healthcare, Northampton, United Kingdom.

Morris, D. J., & Webb, E. L. (2023). Paradigms and sources of distress in male healthcare workers: Understanding trauma through a gendered lens. [Paper]. Division of Forensic Psychology Annual Conference, British Psychological Society, Belfast, UK.

OUR PUBLICATIONS

Webb, E. L., & Morris, D. J. (2023). Disclosing childhood trauma: A pilot study exploring attitudes and experiences of males who have disclosed to a professional. [Paper]. Division of Forensic Psychology Annual Conference, British Psychological Society, Belfast, UK.

Childs, L., Worsfold, J., Webb, E. L., Cobden, C., & Morris, D. J. Traumatic brain injury screening in male forensic services: Results of a service development initiative. [Paper]. Division of Forensic Psychology Annual Conference, British Psychological Society, Belfast, UK.

Morris, D. J., & Webb, E. L. (2022). Social identity theories and their application to forensic settings. In J. Harvey & D. Ambrose (Eds.), *Social Psychology in Forensic Practice*. London: Routledge.

Morris, D. J., & Webb, E. L. (2023). On the outside looking in: The potentially morally injurious experiences of healthcare leadership personnel during the COVID-19 pandemic [Paper]. Comprehensive Moral Injury Conference, Moral Injury Support Network for Servicewomen, Seattle, USA.

Webb, E. L., Worsfold, J., Morris, D. J., & Greenwood, A. (2022). The psychological impact of traumatic incidents in mental health workers: Levels of shame and guilt in referrals to a staff trauma support service. [Poster] 3rd International Trauma Informed Care in Practice Conference, Centre for Developmental and Complex Trauma & Crisis, Disaster & Trauma Section of the British Psychological Society, Northampton, United Kingdom.

Morris, D. J., Webb, E. L., & Devlin, P. (2022). Moral injury in secure mental healthcare. Part II: Experiences of potentially morally injurious events and their relationship to wellbeing in health professionals in secure services. *Journal of Forensic Psychiatry and Psychology*.

Morris, D. J., Webb, E. L., Trundle, G., & Caetano, G. (2022). Moral injury in secure mental healthcare. Part I: Exploratory and confirmatory factor analysis of the Moral Injury Events Scale. *Journal of Forensic Psychiatry and Psychology*.

Webb, E. L., Morris, D.J, Watson, E., Fox E., Sibley, V., & Taylor, V. (2022) Which complex PTSD symptoms predict functional impairment in females with comorbid personality disorder needs? Research and treatment implications,

Owczarek, M., Karatzias, T., McElroy, E., Hyland, P., Cloitre, M., Kratzer, L., Knefel, M., Grandison, G., Ho, G. W. K., Morris, D., & Shevlin, M., (2022) Borderline Personality Disorder (BPD) and Complex Post Traumatic Stress Disorder (CPTSD): A network analysis in a highly traumatised clinical sample, *Journal of Personality Disorders*, 4.

Morris, D. J., Webb, E. L. (2022) Trauma and wellbeing profiles of healthcare professionals in *psychiatric services in the UK: Implications and recommendations*. [Paper presentation]. 2nd International Conference on Trauma and Mental Health, Jerusalem, Israel

Webb, E. L., Morris, D. J., & Fox, E. (2022). Elevated distress and risk, and reduced quality of life in women with comorbid complex PTSD and emotionally unstable personality disorder. [Poster presentation]. 2nd International Conference on Trauma and Mental Health, Jerusalem, Israel.

Webb, E. L., Ireland, J. L., Lewis, M., & Morris, D. J. (2022). Sources of moral injury in secure psychiatric healthcare: A meta-ethnography [Paper presentation]. 2nd International Moral Injury in Occupational Settings Conference, British Psychological Society Crisis, Disaster and Trauma Section and St Andrew's Healthcare, Northampton, United Kingdom

Morris, D. J, Webb, E. L., Fox, E., Beber, E., & Steen S. (2022) Extending the trauma lens in Forensic Mental Health Services, [Symposia] International Annual Meeting & Conference, International Association of Forensic Mental Health Services, Berlin, Germany, June.

Morris, D.J., Webb, E.L, Umpunjun, P., Fox., E., & Beber, E. (2022) Addressing the trauma in the room: The differential trauma needs of women with co morbid EUPD and Complex PTSD in secure services. [Oral paper] International Annual Meeting & Conference, International Association of Forensic Mental Health Services, Berlin, Germany, June

Webb, E.L, & Morris, D.J. (2022) Re-traumatisation: The impacts of placement breakdowns in care for adolescents with developmental disorders [Oral paper] International Annual Meeting & Conference, International Association of Forensic Mental Health Services, Berlin, Germany, June

Morris, D.J. & Webb, E.L, (2022). Reconsidering frameworks for trauma in healthcare professionals: The impact of exposure to violence and restrictive practices: theoretical and support implications. [Oral paper] International Annual Meeting & Conference, International Association of Forensic Mental Health Services, Berlin, Germany, June

OUR PUBLICATIONS

Steen, S., Morris, D.J., Hamilton, H., Law, G. (2022) The Prevalence and Clinical Impact of Moral Injury in UK Secure Care Settings. [Oral paper] International Annual Meeting & Conference, International Association of Forensic Mental Health Services, Berlin, Germany, June

Webb, E. L., Ireland, J. L., Lewis, M., & Morris, D. J (2022). "When you can't let your conscience be your guide: A Delphi study of morally injurious experiences in forensic mental healthcare" [Poster]. International Association of Forensic Mental Health Services, Berlin, Germany, June

Umpunjun, P., Webb, E.L., & Morris D.(2022)"Exposure to Trauma in Childhood Amongst Male Forensic Populations: A systematic review and Meta Analysis" [Poster]. International Association of Forensic Mental Health Services, Berlin, Germany, June

Umpunjun, P., Webb, E.L., & Morris, D. (2022) "Prevalence of Exposure to Trauma in male prisoners A systematic review and Meta Analysis" [Poster]. International Association of Forensic Mental Health Services, Berlin, Germany, June

Webb, E. L., Ireland, J. L., Lewis, M., & Morris, D.J (2022). Potential sources of moral injury for healthcare staff in forensic and psychiatric settings: A systematic literature review and meta-ethnography [Poster]. International Association of Forensic Mental Health Services, Berlin, Germany, June

Webb, E.L., Morris, D.J, Hamer, A., & Davies, J. (2022) Trauma and institutional risk in a secure developmental disorder service: Does the SAVRY inflate risk in adolescents exposed to ACEs, *Journal of Intellectual Disabilities and Offending Behaviour*, 13(1), 32-44.

De La Rue, L., Keating, F., Gibbs D., Currie, S., & Morris D. (2021) Improving inclusion in trauma research and practice, round table discussion paper, 2nd International Trauma informed care in practice conference, CDT Section of the British psychological Society, Northampton, United Kingdom.

Webb, E. L., Hamer, A., & Davies, J. (2021). Playing the ACE: Does the SAVRY inflate risk in adolescents with developmental disorders exposed to childhood trauma? [Poster]. Trauma Informed Care in Practice Conference, Crisis, Disaster & Trauma Section of the British Psychological Society, Northampton, United Kingdom.

Sibley, V., Webb, E. L., Morris, D. J., & Perry, D. (2021). The relationship between social support and engagement in physical restraint, and its effect on staff wellbeing and functioning. [Poster]. 2nd International Trauma informed care in practice conference, CDT Section of the British psychological Society, Northampton, United Kingdom

Reynolds, K., Holmes, J., Morris, D. & Fox E., (2021) Service user and staff perspectives of the implementation of a trauma-informed assessment in an Emotionally Unstable Personality Disorder inpatient population, *Clinical Psychology Forum*, British Psychological Society, 347, 61-66.

Webb, E. L., Greenwood, A., Hamer, A., & Sibley, V. (2021). Profiling referrals to a trauma support service: Needs and outcomes for staff working in a secure adult developmental disorder pathway. *Advances in Mental Health and Intellectual Disabilities*, 15(5), 209-221.

Morris, D. J (2021) Invited Guest Editorial: Are Intellectual Disabilities an Intersection of exclusion in Trauma research, policy and practice), *Advances in Mental Health and Intellectual Disabilities*, 15(5), 153-157.

Webb, E., Morris, D., Fox, E & Kamath, S. (2021) The importance of measuring functional impairment in the assessment of PTSD and CPTSD, poster presented at the International Trauma Conference, hosted by The Italian Society of Traumatic Stress studies and the Trauma Living Lab, Rome, March

Morris, D.J., Webb, E.L., Foster-Davies, L., Gibbs, D., McAllister P., Wallang, P.M., & Shaddel, F (2021) Ethnic disparity in use of the Mental Health Act with adolescents with Developmental Disorders at the point of admission into secure services: The outcomes of a Pilot Review, *The Journal of Forensic Practice*, 23(3), 240-253.

Harding, R., Webb, E. L., & Mattacola, E. (2021). Exploring trauma symptomology and physical health profiles, and their relative associations, in a female inpatient EUPD population. [Poster]. Trauma Informed Care in Practice Conference, Crisis, Disaster & Trauma Section of the British Psychological Society, Northampton, United Kingdom

OUR PUBLICATIONS

Morris D, J., Webb, E., Greenwood, A., Steen S., & Ma K, (2021) Gendered Pathways to Moral Injury in Mental Healthcare Practitioners, Oral Conference paper, 2021 Comprehensive Moral Injury Conference (CMIC), Seattle, USA.

Webb, E.L., Lamplough, H., & Morris, D.J (2021) A differential pathway into secure care: Compulsory Care Orders as a marker of elevated adverse childhood experiences (ACEs) in adolescents with a developmental disorder, Clinical Psychology Forum, 342, 24-29.

Webb, E. L., Baker, K., Sibley, V., Lukes, R., Nawab, Z., Platt, M., Ellerby, K., Umpunjun, P., Harding, R., Farthing, S., & Hamilton, A. (2021). Leaving the past behind: Exploring and expanding the ACE framework within a secure deaf mental health population. [Poster] Trauma Informed Care in Practice Conference, Crisis, Disaster & Trauma Section of the British Psychological Society, Northampton, United Kingdom.

Webb, E.L., Moffatt, A., Morris D, J., & Sati, F. (2021) The accumulative impact of failed placements and ACEs on BMI: The impact of re traumatisation, Journal of Disability and Health, 14(4)

Morris D.J., Webb, E.L and Greenwood, A. (2021) Trauma Informed Care for Healthcare professionals: Features, risk factors and intervention approaches for secondary trauma, invited oral presentation, Italian Society of Traumatic Stress Studies, Rome, March.

Morris, D., Webb, E., Fox., E., Sibley, V. (2021) Which Complex PTSD symptoms predict functional impairment in females with comorbid EUPD? poster presented at the International Trauma Conference, hosted by The Italian Society of Traumatic Stress studies and the Trauma Living Lab, Rome, March

Webb, E., Fox., E., Sibley, V., Morris, D. (2021) Compulsory Care Orders are a red flag for higher levels of adversity and risk of obesity in developmental disorder, poster presented at the International Trauma Conference, hosted by The Italian Society of Traumatic Stress studies and the Trauma Living Lab, Rome, March

Morris, D. J., Gibbs, D., & Wallang, P (2021) Are racial inequalities in the mental health act a source of moral injury? Oral paper, Moral injury in healthcare, BPS Trauma Section Conference, February, UK.

Greenwood, A., Webb, E. L., & Lunn, A. (2020). Trauma response service: Who accesses and why? [Paper]. Trauma Informed Care in Practice Conference, Crisis, Disaster & Trauma Section of the British Psychological Society, Northampton, United Kingdom.

Morris, D.J., Webb, E.L., Stewart, I., Galsworthy, J., & Wallang, P. (2021) Comparing co-production approaches to dynamic risk assessments in a forensic Intellectual disability population: Outcomes of a clinical pilot, Journal of intellectual disabilities and offending behaviour, 12(1), 23-36

Morris, D. J., Webb, E., Fox, E., Holmes, J., Reynolds, K., Head, M., Lunn, A., Canterbury, R., McAllister, P., L., Dionelis, K., & Kamath., S (2021) Examining the prevalence of complex PTSD in an inpatient DBT service for females with a primary diagnosis of EUPD, Abuse, 2(1).

Moffatt, A., Webb, E. L., & Parmar, E. (2020). The relationship between adverse childhood experiences, placement breakdowns and BMI in an adolescent secure inpatient population with developmental disorders. [Poster]. Trauma Informed Care in Practice Conference, Crisis, Disaster & Trauma Section of the British Psychological Society, Northampton, United Kingdom. (Received BPS Best Poster Award).

Morris, D.J., & Webb, E. L. (2021), Understanding multiple inequalities and trauma needs through a gendered lens: The case for inclusive gendered approaches to trauma informed care. In P. Mullen (Ed.) The Knot: Responding to Poverty, Trauma & Multiple Disadvantage, (pp. 28-39). Revolving Doors Agency, London.

Morris, D. J., & Beber, E. (2020) Intellectual Disability and Trauma: A question of causality, Trauma Informed Care: Supporting systems and service users, Oral paper, British Psychological Society: Crisis, Disaster and Trauma Division Conference, November, UK.

Jenson, K., Hamlet, N., Eldridge A, Batten R., & Morris D. (2020) The impact of Co-Production on the Client-Therapist therapeutic relationship in an Intellectual Disability Service, Forensic Update, 135, 13-19.

Morris, D.J., Webb, E.L., Dionelis, K., Parmar, E., & Wallang, P. (2020) Adverse Childhood Experiences and their relationship to BMI in a developmental disorder adolescent population, Abuse: An International Impact Journal, 1(2)



Centre for Developmental and Complex Trauma

Part of St Andrew's Healthcare

The Foster Postgraduate Centre,
Main Building
St Andrew's Healthcare
Billing Road
Northampton
NN1 5DG



CDCT@stah.org



[@CDCT_Updates](https://twitter.com/CDCT_Updates)



www.stah.org/cdct

