



CDCT@standrew.co.uk



@CDCT_Updates



www.stah.org/cdct/



CONFERENCE DELEGATE PACK

2ND INTERNATIONAL MEETING THE TRAUMA NEEDS OF PEOPLE WITH INTELLECTUAL DISABILITIES ONLINE CONFERENCE

12TH DECEMBER 2023



Centre for Developmental
and Complex Trauma

Part of St Andrew's Healthcare



V.CHESTER@NHS.NET



<https://twitter.com/RADIANTCRG>



<https://radiant.nhs.uk>

CONTENTS

PAGE

A welcome from the Scientific Committee	3
Housekeeping: Important information about the Conference	4
Full conference programme	5-6
Conference committee, chairs & speakers biographies	7-14
Academic course in Trauma	
MSC: Practitioner in Psychological Trauma	15
Meeting trauma needs in secure services: Optimising therapeutic outcomes	16
Conference hosts The Centre for Developmental and Complex Trauma	17
Special interest groups	
Moral injury Special interest Group	18
NEW Trauma and personality disorder Special Interest Group	19
CPD research skills events for practitioners	20-22
Information about RADiANT	23

A WARM WELCOME FROM US.....

A very warm welcome from us to our 2nd international online conference, focused on meeting the trauma needs of people with intellectual disabilities. We are delighted to host the 2nd collaboration between the Centre for Developmental and Complex Trauma and RADiANT.

This years conference explores a number of key themes that are focused on improving experiences and outcomes for people with intellectual disabilities who have trauma focused needs.

The conference programme brings together presentations across four key areas of practice. We have papers that focus on the needs of people with moderate to severe intellectual disabilities, who represent a population who are very much marginalised in trauma research and developments.

We have a series of papers that explore how learnings from neurobiological evidence detailing the impacts of trauma can be applied to inform service frameworks and therapy.

Adopting a systemic lens, we have papers addressing both familial and systems needs, including the role of trauma informed leadership and supporting services to develop trauma and relational focused plans, moving away from traditional challenging behaviour frameworks. and principles.

Considering the role of direct interventions we have also have two papers presenting on narrative therapies and emotional regulation.

We hope you play an active role in the day and stimulate much needed discussions in this area of practice.

This pack also contains details of articles of interest and assessment tools, which with further learnings may be useful to your services.



Dr Deborah Morris,
Consultant Clinical Psychologist
Director of Programmes, Postgraduate Programmes in
Trauma, University of Buckingham
Director Centre for Developmental and Complex Trauma



Verity Chester
Research Associate & RADiANT
Network Manager
Hertfordshire NHS Foundation Trust
Editor: Advances IN Autism

HOUSEKEEPING:

IMPORTANT INFORMATION ABOUT THE CONFERENCE



This is an online Conference using Zoom Webinar. All presentations are live. The presentations are not being recorded. Your microphone and video camera will be switched off to help the conference run smoothly. You will be able to use Chat to send messages to selected people and use the Q&A to ask questions about the presentations.

The speakers, presentation slides and interpreters will be best viewed using Gallery View. You will not be able to use Multi-Pin.

Five minutes before the end of each presentation the chair will appear on the screen indicating a warning that the presenter is nearing the end of their presentation.



To check your access to Zoom, you can join a test meeting set up by Zoom please go to Joining a test meeting – Zoom Help Center to find out how to do this. Many problems with video conferencing are due to low bandwidth – please check yours before the conference starts. On the day, we are not able to help delegates resolve problems with their own internet connections



We very much want this to be an interactive event and we encourage you to ask questions throughout the event. Questions and comments to specific individuals can be posted into the 'chat' function If you would like to ask a question relating to one of the posters or oral presentations, please use the Q&A function. The chairs of each symposia will ask questions posted into Q&A boxes at the end of each oral presentation



Each delegate will be sent a Certificate of Attendance after the conference. The conference counts for 6.0 hours of CPD.

CONFERENCE PROGRAMME:

Timing	Topic	Speaker & Affiliation
09:30	Welcome and housekeeping	Dr Deborah Morris and Verity Chester
	Conference proceedings	
09:37	Brief practice update: The ITQ-ID	
09:45	Listening and responding: Therapeutic interventions following severe abuse	Dr Carmel Digman
10:30	Implementing trauma informed care in practice: Evolving support plans from behavioural to relational support Presentation and panel discussion with practitioners	Dr Paddy McNally
11:15-11:30 comfort break		
11:30	Using the Neurosequential Model of therapeutics to reduce restrictive practice: A KALM-AR approach	Emma Longfellow
12:05	Using neurobiological evidence to inform trauma therapy in practice	Dr Jon Taylor

CONFERENCE PROGRAMME:

12:40	Disregarded ghosts of contested nurseries: On experiences of interpersonal trauma among parents with intellectual disability	Dr Mårten Hammarlund
Lunch 13:15 – 14:00		
14:05	Trauma-informed leadership in developmental disability services	Dr Amanda J Rich
14:40	Trauma treatment using Narrative Exposure Therapy adapted to persons with intellectual disabilities or severe chronic mental disorders	Dr Birgit Mayer
15:15-15:30 comfort break		
15:30	Helping distressed people manage their chaotic emotions	Dr Jennifer Clegg
16:05	The assessment of trauma needs in adults with moderate to severe intellectual disabilities: A pilot study	Dr Annemieke Hoogstad
16:40	Conference summary and close	Dr Deborah Morris & Verity Chester

CONFERENCE PROGRAMME: CHAIRS

Dr Deborah Morris (Scientific Committee and Co-Chair)

Director, Centre for Developmental and Complex Trauma, UK
Director of Postgraduate Programmes in Trauma,
Faculty of Medicine & Health Sciences, University of Buckingham

Deborah is the director for the Centre for Developmental and Complex Trauma and the Director of Postgraduate Programmes in Trauma, University of Buckingham. A Consultant Clinical Psychologist by training, Deborah has worked clinically with adults with complex personality disorder, neurodevelopmental, forensic and mental health needs in the community, assertive outreach, crisis, residential, prison and inpatient settings.



Deborah has previously worked in professional and clinical lead positions and in services to support the mental health and trauma needs of healthcare professionals. Her publications and ongoing research interests include occupational distress and trauma, treatments for personality disorder, intellectual disabilities, developmental trauma disorders, the intersection between trauma and personality disorder, moral injury, gendered approaches to trauma, adverse childhood experiences, the physical health impact of trauma, and the psychometric properties of psychological tools.

In her spare time, Deborah indulges her obsessions with Star Wars, scuba diving with sharks and her typically unsuccessful attempts to establish an organic allotment. She is an avid cook and enthusiastically avoids gyms and all forms of organised fitness.

Verity Chester

RADiANT Network Manager

Verity Chester is a Research Associate and the Network Manager for RADiANT, a clinical and research consortium focuses on mental health and behavioural issues associated with five developmental conditions; Intellectual Disability, Autism, Attention Deficit Hyperactivity Disorder, Epilepsy and Acquired Brain Injury. She is also the Editor of Advances in Autism journal, and is currently studying a PhD at the University of East Anglia, Norwich, and her research is investigating social information processing among autistic offenders.



Prior to this, Verity obtained her BSc in Forensic Psychology from the University of Leeds in 2009, and a MSc in Forensic Psychology from London Metropolitan University in 2012. Throughout her studies Verity has worked as a Research Associate on a portfolio of projects ranging from clinical audit, service evaluation, quality improvement, and research. Verity has authored over 70 peer reviewed publications and her research interests focus on intersections of intellectual disability, autism, mental health and offending behaviour. For further details relating to publications please see ResearchGate: www.researchgate.net/profile/

CONFERENCE PROGRAMME: SPEAKERS

Dr Paddy McNally
Consultant Clinical Psychologist
Ulster University

Dr Paddy McNally is a consultant Clinical Psychologist and PhD researcher at the University of Ulster. He has worked in learning disability services for over 20 years in Northern Ireland. He has a special interest in working with individuals with a learning disability who have been impacted by extensive trauma experiences and in engaging with the staff teams who support them. Dr McNally has recently completed a research PhD at the Ulster University, where he facilitated the co-production of a trauma informed care framework for residential and supported living accommodation for adults with a learning disability.



For further details relating to publications please see ResearchGate: www.researchgate.net/profile/

Jon Taylor
Consultant Forensic Psychologist,
Approved Clinician in Training
Centre for Developmental and Complex Trauma

Jon is a consultant forensic psychologist and psychotherapist who has worked in range of prison, secure hospital and community forensic settings for almost 30 years. With a keen interest in developing a rich understanding of the role of trauma and adversity in the lives of those who develop offending behaviours, Jon is committed to promoting and modelling a compassionate and co-operative approach to all aspects of forensic service provision.

Jon has been an accredited member of the BABCP since 1995, is a trained Compassion Focused Therapist and cofounder of the CFT forensic special interest group.

For further details relating to publications please see ResearchGate: www.researchgate.net/profile/



CONFERENCE PROGRAMME: SPEAKERS

Dr Amanda Rich

Associate Professor
Human Services
York College, Pennsylvania
Director, Institute for Social Healing

Dr. Amanda Rich is an associate professor of Human Services at York College of Pennsylvania where she teaches course work related to program design and evaluation, direct practice, trauma-informed care, and public policy impacting human service organizations. She is the director of the Institute for Social Healing and the owner of Open Road Inclusive Community Consulting LLC. Her work is rooted in the belief that human services have the potential to help make our communities more inclusive, diverse, fairer, healthier, and stronger. She has a master's degree in Applied Behavior Analysis and Special Education from the Teacher's College at Columbia University and a doctoral degree in Human Development and Family Studies from the University of Delaware



Dr. Nikki DiGregorio (pronouns: she/they) is an Assistant Professor of Family Studies & Community Development at Towson University. Dr. DiGregorio received a PhD in Human Development & Family Studies from the University of Delaware in 2014. Prior to joining the faculty at Towson University, Dr. DiGregorio taught at the university level in southeast rural Georgia for nine years. Dr. DiGregorio has taught Programming & Evaluation for Family Services, Legal & Public Policies Affecting Families, Diversity & Sexuality in Human Development, Introduction to Family Studies, and Family Resource Management.

Carla Strassle is a Professor of Psychology at York College of Pennsylvania. As a clinical psychologist working in academia, she helps undergraduate students understand the impact that stigma of mental illness has on people diagnosed with disorders as well as the larger society. As the Director of Experiential Learning, Internships, and Practica in the School of Behavioral Sciences and Education, she also plays a role in getting students out of the classroom and into work settings where they can positively impact society.



CONFERENCE PROGRAMME: SPEAKERS

Emma Longfellow,
Consultant Forensic Psychologist
Psychology Lead National High Secure Learning Disability
& Autism service.

Emma Longfellow is a Consultant Forensic Psychologist and Psychology lead for the National High Secure LDA service part of Nottinghamshire NHS Foundation Trust. She has worked clinically in the NHS and HMPPS For over 20 years specialising in work with learning disability, autism, personality, complex trauma and harmful sexual behaviour. Emma has been formally trained in a range of clinical interventions to work with the impact of trauma including Dialectical Behaviour Therapy (DBT), Radically Open DBT, Prolonged Exposure DBT, Eye Movement Desensitisation and Reprocessing (EMDR), Schema therapy and Acceptance and Commitment Therapy (ACT). She is passionate about improving how forensic services sequence and work with individuals who experience chronic and profound developmental trauma to enable recovery, growth and reduce risk of harm.



This has contributed to her specialising as a practitioner in the Neurosequential Model of Therapeutic's as a clinically relevant model of understanding developmental and neurological impacts of trauma. Emma has published and presented several papers on marginalised groups, trauma and risk including most recently:

Longfellow, E. and Hicks, R., 2022. Trauma and intellectual disability. In Trauma-Informed Forensic Practice (pp. 111-129). Routledge.

Longfellow, E. and Webster, A. 2022, Changing the Lens-A Neuro-sequential Model Approach to understanding trauma in Forensic Intellectual Disability Services. 3rd International conference of trauma informed care.

Longfellow, E. and Skelding, J., 2022. Autism in forensic settings. Diversity and Marginalisation in Forensic Mental Health Care.

Skelding, J. and Longfellow, E., 2022. Learning disability and forensic mental health. Diversity and Marginalisation in Forensic Mental Health Care.

Longfellow, E., Callender, M. and Hicks, R., 2022. 20 Forensic Risk Assessment in Learning Disability Populations. Challenging Bias in Forensic Psychological Assessment and Testing: Theoretical and Practical Approaches to Working with Diverse Populations.

Longfellow, E. 2022 Neurosequential Model in Forensic Intellectual Disability – ensuring safer transition. 1st National Forensic LDA conference.

CONFERENCE PROGRAMME: SPEAKERS

Dr Birgit Mayer, Dipl. Psychology
The Tilia, Housing & Employment
Zürich, Switzerland

From 1984 - 1991 I studied psychology at the University of Konstanz and graduated as a Diplom psychologist. After studying, I worked at the Luisenlinik in D-Bad Dürreim, a psychosomatic clinic, for about one year. Since October 1992 I have been working in dormitory Tilia, an institution for 130 people with mental or psychological impairment. My function is specialist service agogics, member of management and support. My topics are ID, autism, challenging behaviour, communication, traumatherapy, sexual violence and people with mental disabilities. I have been giving lectures and courses on the above topics since 2011. Above all, the topics of trauma and trauma therapy have been my focus for more than 15 years. First I learned NET (Narrative Exposure Therapy) at the University of Konstanz and then I completed trauma therapy training with Michaela Huber and then the enactive traumatherapy by Ellert Nijenhuis (basic and advanced course).



From 2013 - 2019 I conducted a research project on the use of NET for traumatised people with ID in our institution. I wrote my doctoral thesis about this project, which I completed in October 2020 with the degree of Dr.rer.nat. Together with Prof. Ulrich Elbing, I have been leading a working group since 2017. There we develop first german treatment recommendations for traumatised people with ID. We reconstituted the interdisciplinary and international group in 2020 and we continue to discuss these recommendations. We are an official working group of the DeGPT (German-speaking Psychotrauma Society).

Our most current project is working on the revision of the German-language S3 PTSD guidelines, in which guidelines for traumatised people with ID are developed for the first time

CONFERENCE PROGRAMME: SPEAKERS

Dr Carmel Digman

Clinical and Academic Tutor

Salomons Institute for Applied Psychology

Canterbury Christ Church University



I have been privileged to have a varied career and experience in different fields. My early experience working in care settings, residential schools and homes and the community was with people with learning disabilities and children in a forensic setting. I raised a family, worked as a freelance artist/illustrator, taught art to adults and children, and organised community events. In 2000 I began working in schools as part of early intervention projects to address intergenerational family difficulties and educational disaffection. This became a larger project in Kent schools introducing family liaison, working with Children's Centres and Primary Intervention Projects and designing research and evaluation. I arrived late a Clinical Psychology, graduating in 2013 and working in an NHS mental health of learning disability team. I have also taught for many years, particularly themes of learning disability psychology, autism, spirituality and religion in clinical practice, and professional roles and identities in clinical practice.

Stories and drama have been a focus of my work with children and adults. Narrative and systemic models inform my practice. But mainly, my interest is people, individually and as members of communities. The most vulnerable of people are often the most creative, resilient, and wise in experiences. My research areas have encompassed the experiences of children adopted and fosters, parents who have survived difficult childhoods, people with learning disabilities and their families, and survivors of trauma.

Clinical psychology is concerned with the mental life of people in distress. To approach this with any hope of success, listening, opening our minds to others and becoming partners with those we call clients, is critical. I am endlessly fascinated by this.

CONFERENCE PROGRAMME: SPEAKERS

Professor Jennifer Clegg

Living with Disability Research Centre,
La Trobe University,
Melbourne, Australia

Jennifer Clegg lives in the UK and is currently Adjunct Professor, La Trobe University, Australia. She was Associate Professor, University of Nottingham UK for 25 years, and in parallel, Consultant Clinical Psychologist and UKCP registered Family Therapist working in Nottinghamshire Healthcare NHS Trust to support the most acutely distressed or disturbed adults with ID. Publications with colleagues in sociology and psychiatry include empirical research into what the transition to adult services reveals about policy; conceptual research into the history and ethics of practice; and treatments based on attachment theory, video analysis of personhood developed by Dutch 'master' Jacques Heijkoop (RIP 5.10.23), and psychomotor therapy. She edited the Journal of Intellectual and Developmental Disability 2017-2021, increasing the Impact Factor from 0.87 to 2.1.



Dr Mårten Hammarlund

Clinical Psychologist
Child Psychotherapist
PhD Candidate
Department of Psychology, Stockholm University
Sweden

Mårten Hammarlund is a clinical psychologist and child psychotherapist, with more than a decade of experience from work with children and their families. He works as a teacher and clinician at a specialized child- and adolescent mental health unit in Stockholm, Sweden, and is just about to finalize his PhD studies in developmental psychology at Stockholm University. The dissertation focuses on the role of interpersonal trauma and psychosocial adversity for caregiving and child developmental outcomes in families headed by parents with intellectual disability”.



CONFERENCE PROGRAMME: SPEAKERS

Dr Annemieke Hoogstad

Psychologist, MSc/ PhD candidate
Radboud University, Nijmegen
Amerpoort, Baarn,
The Netherlands

Annemieke Hoogstad is a psychologist and EMDR Europe practitioner. She has worked in care for people with intellectual disabilities (ID) for over twenty years, fourteen of which as a trauma-therapist. She currently works as psychologist and researcher at Amerpoort, a Dutch organization for people with ID. Her research focuses on the diagnosis and treatment of PTSD in people with severe and moderate ID. In her own practice, she provides training about psychotrauma and ID and supervision.



MSC
PRACTITIONER

Psychological Trauma

Enrol for September 2024

The part-time, two-year programme provides health professionals with the theoretical understanding and professional competencies to develop, provide and lead psychological trauma services and trauma informed care models, for different populations with wide ranging trauma needs.

The structure and content of the MSc follows the level three 'trauma expert' competencies outlined by the BPS. Face to face teaching is delivered at the dedicated Foster Postgraduate Centre at the Centre of Developmental and Complex Trauma, St Andrew's Healthcare, Northampton.



Structure of the MSc

Module 1: Theory informing practice: Theoretical aspects of different trauma presentations

Module 2: Idiosyncratic assessment & formulation

Module 3: Idiosyncratic treatment of trauma & associated needs

Module 4: Working with different populations

Module 5: Self and systems in context: Developing leadership skills & trauma-informed systems

Module 6: Research methods and dissertation

For an informal conversation about the MSc, please contact Dr Deborah Morris, Director of Programmes, deborah.morris@buckingham.ac.uk



THE UNIVERSITY OF
BUCKINGHAM



Centre for Developmental
and Complex Trauma
Part of St Andrew's Healthcare



Meeting trauma needs in secure services: *"Optimising therapeutic outcomes"*

Online Conference, 19th March 2024

Symposia 1:

Trauma focused approaches to
assessment and psychological
formulation



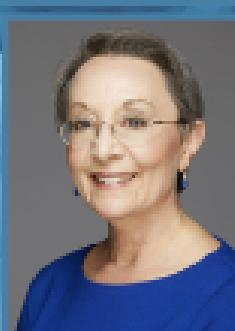
Lawrence Jones
Head of Clinical & Forensic
Psychology Services, Rampton
Hospital, University of
Nottingham, School of Medicine



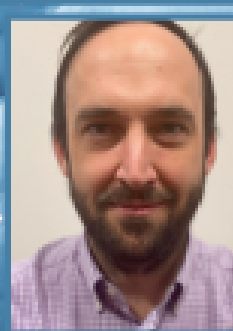
Dr Julie Goldenson
University of Toronto
Department of Applied
Psychology & Human
Development

Symposia 2:

Working with marginalised groups:
Practice based Guidance



Prof Patricia Kerig Professor
of Clinical Psychology
University of Utah



Dr Alex Hamilton
Clinical Director
St Andrew's Healthcare



Dr Jon Taylor
Consultant Forensic
Psychologist, Senior Lecturer,
Centre for Developmental
and Complex Trauma

Symposia 4:

Family and peer interventions



Dr Camille R. Quinn
Associate Professor, Center
for Equitable Family and
Community Well-Being
University of Michigan



Dr. Nena Messina
President and CEO
Envisioning Justice
Solutions, USA

Symposia 5:

Optimising treatment systems



Dr Sunil Lad
National Clinical Director for
Health & Justice
NHFT



Dr Stephanie Covington
Institute for Relational
Development
Center for Gender & Justice
La Jolla, California

Ticket information

Early Bird Delegate (16th February 2024)	£30.00
Standard Delegate	£40.00
St Andrew's Employees, CDT section	£30.00
BPS members & APA members	
Student & Poster Presenter Rate	£25.00

**Discounted group booking rates available
on request from cdct@stah.org**

Register at: www.stah.org/who-we-are/TNSC2024



Centre for Developmental and Complex Trauma

Part of St Andrew's Healthcare



About us

The Centre for Developmental and Complex Trauma (CDCT) was established in 2020 and is based in Northampton. The core aim of the CDCT is to drive better outcomes for people who have experienced repeated incidents of trauma across the lifespan.

Our values

Our values integrate contemporary frameworks of working with trauma; combined with a high level of academic rigour to deliver research, further education and CPD activities that are theoretically underpinned and focused on developing data-driven approaches to understanding trauma and delivering personalised care.

Central to our values are the role of co-production and empowerment. The CDCT operates a highly collaborative working model, prioritizing developing relationships with stakeholder groups to ensure that our work is co-produced, relevant, impactful and translatable to clinical services.

Our CPD events, research and service development activities are conducted through an intersectional lens, with the differential impact of gender, neurodiversity and ethnicity playing a central role in the design and reporting of our activities.

Contact Us

Please contact us for an information discussion about opportunities to work together: please email us at CDCT@stah.org or visit www.stah.org/cdct/

Portfolio of activities

To achieve our goals, the CDCT delivers a growing portfolio of activities and services that seek to advance knowledge, skills and clinical practice.

The CDCT's portfolio of current activities



Student and professional clinical and research placements



Comprehensive research, service development and evaluation programme covering 8 areas of trauma and over 20 current projects



International conference programme



Postgraduate education programme in psychological trauma with the University of Buckingham



Research skills for clinicians CPD programme



Hosting special interest groups



Consultation and supervision



Join our Moral Injury Special Interest Group



Centre for Developmental and
Complex Trauma

Moral Injury Special Interest Group Meeting



Tues 5th March | 1:15 PM - 3:00 PM (BST) | Online via MS Teams

The CDCT hosts a SIG for people with an interest in moral injury. Our bi-annual meetings provide opportunities to network with other clinicians, researchers, academics, students and professionals with a shared interest in the field.

With a growing network of members from around the world, the SIG provides a platform to share research and clinical activities within the field and to disseminate findings, ideas and reflections. Last month, we heard from **Verity Smith, Trainee Clinical Psychologist**, and **Dr Deborah Morris, Director of the CDCT** with presentations on the experiences of moral injury on trust in emergency distress and an examination of the role of moral injury in occupational distress.

We are currently finalising the agenda for our next meeting on 5th March, so if you would like to join the SIG and have any work to share, please do get in touch!



To join the SIG, email: CDCT@stah.org





Centre for Developmental
and Complex Trauma

Part of St Andrew's Healthcare

Join our Special Interest Group: Advancing trauma & personality disorder needs

The CDCT is launching a new special interest group focusing on advancing our understanding and treatment of trauma and personality disorder. The SIG group will meet twice a year and will:

- Host presentations relating to good practice
- Discuss the latest evidence
- Share research collaboration opportunities
- Members will also receive Newsletters twice a year relating to the SIG and practice updates

There are no costs associated with joining the SIG or attending SIG meetings. To join the SIG please email CDCT@stah.org. The first meeting is planned for end of May 2024



Statistics for Clinicians (SPSS Part I) - Online

22

JAN 2024
9:30 - 4:00

Purpose

Statistical analyses are a core competency for researchers, and an essential skill for anyone wishing to conduct their own study. Part I of this workshop will introduce attendee's to SPSS as a statistical software package for conducting data analysis. Key statistical terms and concepts (e.g., normality, power, homogeneity) will also be covered in this workshop. A dataset will be provided by the instructors for use throughout this event.

Who for?

This workshop is suitable for individuals keen to advance their knowledge and skills in commonly used statistical methods, and develop their competency in SPSS. Eligible staff from all professions are welcome to attend.

Learning outcomes

- Be familiar with the layout and functions of SPSS, including the setting up of databases and inputting of data
- Be familiar with a range of statistical concepts (e.g. statistical power)
- Be able to check the properties of a database and understand their implications for the suitability of various statistical tests.

Format & requirements

This workshop is scheduled to be an online event which will take place via MS Teams. This workshop will involve a mixture of live teaching and interactive, practical exercises. The session will run for 6.5 hours, with breaks throughout the day. There are no training prerequisites for this course. Attendee's will require access to a laptop, with the latest version of SPSS software installed.

Costs and booking

Workshops start from £40 for student bookings and £45 for standard bookings. Further information on workshop costs and how to book a place can be found at our website: <https://www.stah.org/cdct/events>

A1, A2



Centre for Developmental
and Complex Trauma
Part of St Andrew's Healthcare

Statistics for Clinicians (SPSS Part II) - Online

23

JAN 2024
9:30 - 4:00

Purpose

This event is the second of a two-part workshop designed to improve competency and confidence in statistical analyses relevant to those working in clinical settings. Part II of this workshop will develop attendee's knowledge of, and equip them with the skills to conduct and report various types of analyses used in clinical research. In this workshop, we will cover t-tests (and non-parametric alternatives), odds and risk ratio's, chi-square tests, correlational analyses, and various types of regressions. A dataset will be provided by the instructors for this event.

Who for?

This workshop is suitable for individuals keen to advance their knowledge and skills in commonly used statistical methods, who are familiar with basic statistical concepts and the SPSS software. Eligible staff from all professions are welcome to attend.

Learning outcomes

- Be familiar with a range of statistical techniques, and know how to conduct and report each test
- Be able to select the most appropriate test based on the research question and characteristics of the data (i.e. normality, type of variables)
- Be able to design a basic data analysis plan suitable for a research study

Format & requirements.

This workshop is scheduled to be an online event which will take place via MS Teams. This workshop will involve a mixture of live teaching and interactive, practical exercises. The session will run for 6.5 hours, with breaks throughout the day. Knowledge of basic statistical concepts and a basic level of competency in SPSS (i.e. knowledge of how to create and define variables) is required. Individuals who do not meet this requirement should attend Part I of the workshop also. Attendee's will require access to a laptop, with the latest version of SPSS.

Costs and booking

Workshops start from £40 for student bookings and £45 for standard bookings. Further information on workshop costs and how to book a place can be found at our website:
<https://www.stah.org/cdct/events>

A1, A2



Centre for Developmental
and Complex Trauma
Part of St Andrew's Healthcare



Conducting Delphi Studies - Online

20

MAY 2023
9:30 - 4:00

Purpose

The Delphi method is a valuable, yet lesser used approach to the collection of opinions from expert sources. This method is particularly useful when exploring an issue or topic where there is little existing evidence or agreement. This workshop will develop attendee's knowledge of the Delphi method and their skills in designing, conducting and reporting a Delphi study.

Who for?

This workshop is suitable for clinicians at all stages of their career, who are keen to develop skills in new methodological approaches and/or are wanting to conduct an opinion study. Staff from all professions are welcome to attend.

Learning outcomes

- Have an understanding of the Delphi method, including what it involves and when to use it
- Be able to design and carry out a Delphi study that addresses an appropriate research question
- Be familiar with the key components for inclusion in the write-up of a Delphi study

Format & requirements

This workshop is scheduled to be an online event which will take place via MS Teams. This workshop will involve a mixture of live teaching and interactive, practical exercises. The session will run for 6.5 hours, with breaks throughout the day. A basic understanding of research design is necessary for this workshop. Access to a laptop is also essential for attendance at this event.

Costs and booking

Workshops start from £40 for student bookings and £45 for standard bookings. Further information on workshop costs and how to book a place can be found at our website: <https://www.stah.org/cdct/events>

A1, A2,
A3, C2, D1,
D2, D3





What is RADIANT?

Research in Developmental Neuropsychiatry (RADIANT) is a clinical and research network of NHS service providers from across the UK. Hosted at present by Hertfordshire Partnership University NHS Foundation Trust (HPFT), it was launched in July 2019. Clinicians from over 20 NHS Trusts, clinical academics from over 20 universities across the world and a range of experts by experience, community leaders and professionals from multiple disciplines are involved in the network's activities.

Launched in 2019, RADIANT focuses on mental health and behavioural issues associated with five developmental conditions- Intellectual Disability (ID), Autistic Spectrum Disorders (ASD), Attention Deficit Hyperactivity Disorder (ADHD), Epilepsy (EPI) and Acquired Brain Injury (ABI).

Our network has three over-arching aims:

- Research
- Staff Development
- Public Education

In our first 3 years RADIANT has:

Research

- Supported grant funded research projects including drug trials, psychological interventions and use of technology in patient care.
- Conducted service evaluations and other research projects, including those on epilepsy, long term outcomes, mortality, patient and carer experience.

Public Education

- Led the first co-produced and peer reviewed COVID treatment guidelines in Intellectual Disability.
- Hosted a Great Care Information Hub where staff, service users and family members can have access to reliable evidence-based information.
- Contributed to public education initiatives, including those run by local magazines, schools and churches.

Staff Development

- Published the first detailed guidelines on management of COVID in people with intellectual disabilities.
 - Produced monthly seminar series on intellectual disability and autism related topics, open to staff and experts by experience.
 - Led on the development and promoted training modules on Intellectual Disability and Autism, produced by MindEd for care staff in the community.
 - Attended and presented at national/international conferences and webinars with experts by experience on topics including use of the Mental Health Act, COVID treatment guidelines for people with developmental disorders, autism and epilepsy.
 - Hosted a hybrid launch event to celebrate and showcase the Norfolk Forensic Community Learning Disability Service.
- RADIANT host a monthly Continuing Professional Development series of events focused on a range of issues pertinent to developmental disability. These sessions are held on the last Friday of Every Month, 1-3pm, on Microsoft Teams. To be added to the monthly invitation list, please contact v.chester@nhs.net and elizabeth.patteril@nhs.net. For a list of previous sessions and resources, please visit our website: <https://radiant.nhs.uk/cpd>



CDCT@stah.org



@CDCT_Updates



www.stah.org/cdct/



Centre for Developmental and Complex Trauma

Part of St Andrew's Healthcare

The Foster Postgraduate Centre,
Main Building
St Andrew's Healthcare
Billing Road
Northampton
NN1 5DG



V.CHESTER@NHS.NET



<https://twitter.com/RADIANTCRG>



<https://radiant.nhs.uk>